

# Ski & Snowboard Schools of Aspen Snowmass

Meet our daymakers.

OVER  
**30,000**  
TRAINING HOURS  
TAKEN BY OUR PROS  
EACH SEASON

OVER  
**1,250**  
PROS ON STAFF

FLUENT IN  
**10**  
LANGUAGES



When Ski and Snowboard School is in session at Aspen Snowmass, lasting connections are made—both on and with our mountains. Our dedicated Pros are not just experts in skiing and riding, they are your key to unlocking a wealth of knowledge about everything from terrain to the vibrant après scene. From personalized guidance for you and your friends or family, to instruction for all ages in a MAX 5 group lesson or clinic, our team will help you improve your technique and make sure you love your day on the slopes. It's a big reason why many of our guests return to Aspen Snowmass year after year.

Level up your skills and let us make your day.

**Our Guarantee**

Whether leading you to untouched lines or serving up insider tips on the local scene, we guarantee our Pros will have you loving every moment. We don't take this promise lightly, which is why we created Our Guarantee. If you're not completely satisfied with your experience, the next one is on us.

# Rent Better, Ride Better

Four Mountain Sports has you covered.



At Four Mountain Sports, we make it easy to rent the gear so you can own the memory. With nine convenient locations and the most comprehensive service in the area, Four Mountain Sports has mastered making equipment rental a pleasure. As the only rental shop with locations at the base of all four of our mountains, Four Mountain Sports is your friendly mountain authority, offering free ski and snowboard storage, free overnight equipment transfers to the mountain of your choice, and the best gear in the game.

**NEW**

Four Mountain Sports will conveniently deliver and pick up your ski and snowboard rentals directly to and from your home or hotel in the Aspen and Snowmass Village areas. Deliveries occur every other hour between 8am and 6pm, seven days a week.

# Getting Here

Traveling to Aspen Snowmass from Australia and New Zealand is easy with numerous one-stop connections now available on United Airlines, Delta and American Airlines via LAX and SFO. North America's only slopeside airport, Aspen/Pitkin County Airport (ASE) is located just 4.8 km from Aspen and 9.7 km from Snowmass Village. Air service subject to change.

## Eagle County Airport (EGE)

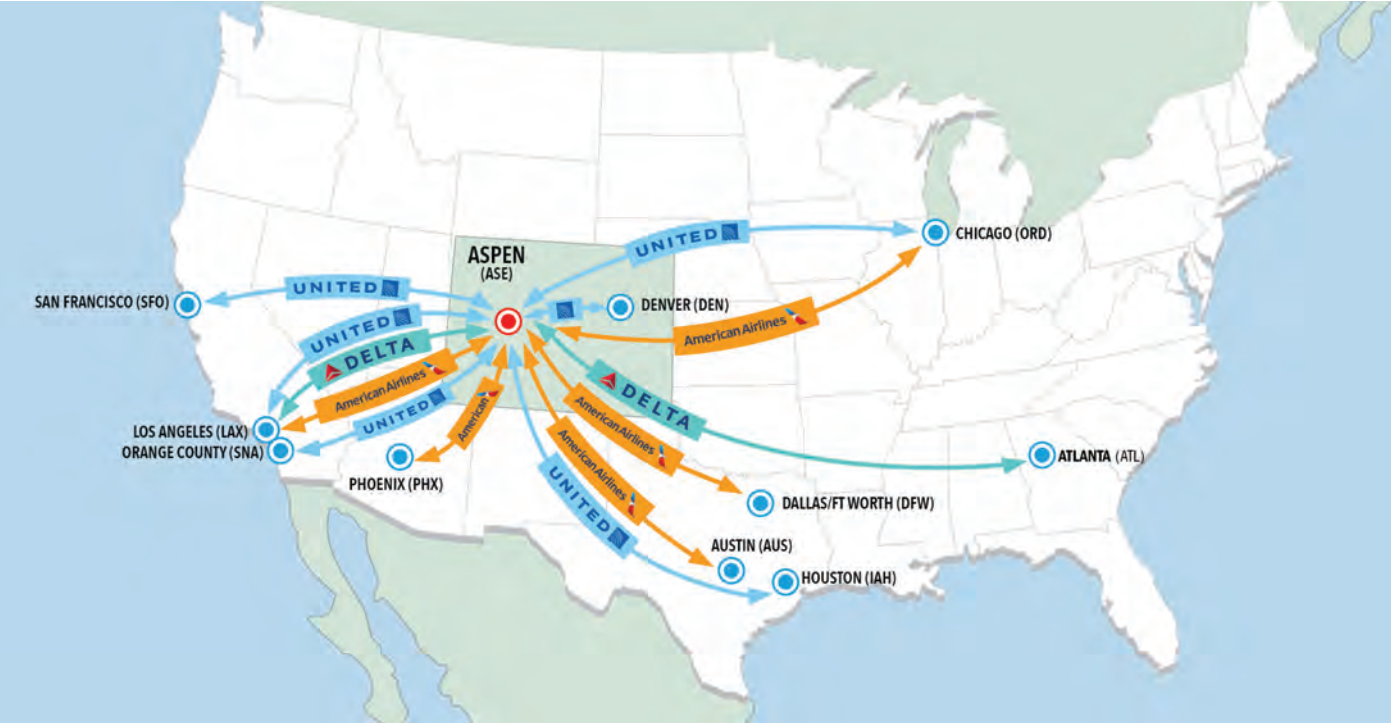
An easy drive, Eagle County Airport is located 70 miles (113 km) from Aspen Snowmass. Served by United and American Airlines.

## Denver International Airport (DEN)

Located 220 miles (354 km) from Aspen Snowmass, DIA has more than 1,700 daily incoming flights from over 215 cities on 24 airlines, including multiple one-stop connections from Melbourne and Sydney on United Airlines, Qantas Airways, Air New Zealand, and American Airlines.

## Local Transportation

Once you've landed, local transportation is comprehensive and convenient. Most lodges provide complimentary transfers to and from Aspen/Pitkin County Airport. Free shuttle buses run continuously between all four mountains.



**Health & Safety**

The health, safety, and welfare of our employees, guests, and community is our top priority. For the most up-to-date information visit [aspensnowmass.com/covid19](https://aspensnowmass.com/covid19)



WINTER 2022 - 2023

# Vacation Packages

Aspen Snowmass packages offer incredible value and are available throughout the season, allowing you to make your trip even longer. Let us help you get the most out of your purchases on lift tickets, lessons, rentals, and lodging.

## Sheer Bliss Early Purchase Offer

Plan your perfect winter getaway ahead of time and save with the Sheer Bliss Early Purchase Offer. Receive a \$95/day lift ticket with the purchase of two+ Days Premium Adult Ski or Snowboard Package\* rental from Four Mountain Sports.

Valid January 1 - April 1, 2023. Book by October 31, 2022.

## Perfect Storm - Free Day

Free Day promotion for stays of four or more nights. Offer available for adults only, not applicable to already discounted child, senior, or teen pricing.

Valid January 1 - April 1, 2023. Book by January 31, 2023.

## Kids Ski Free- Just Rent Their Gear From Four Mountain Sports

Inspire your kids to become life-long skiers and riders all while avoiding the hassle of traveling with their gear. Kids ski free with rentals at Aspen Snowmass—they'll discover winter while you enjoy the savings. Rent children's equipment (ages 7 to 12) for a minimum of two days from Four Mountain Sports, and we'll provide complimentary lift tickets for the same number of days.

Valid January 1 - April 16, 2023. No adult purchase required. Kids six and under ski free.

## SKI30 - Perfection Is Worth The Journey

Enjoy unlimited skiing and riding for 30 consecutive days while saving with SKI30. Explore the powder stashes of Snowmass, the glades of Aspen Mountain, the steep slopes of Aspen Highlands, and the long groomers and terrain parks of Buttermilk. Ski as much (or as little) as you like. SKI30 gives you incredible flexibility to enjoy your vacation at whatever pace feels right.

Valid January 1 - April 16, 2023. Super early purchase price deadline is August 31; Early purchase price deadline is October 31, 2022; Regular purchase price deadline is January 31, 2023.\*\*



## SKI10

Enjoy up to 10 consecutive days of skiing and riding. SKI10 expires 10 days after first use, regardless of number of days scanned. Must be booked via contracted tour operator, with participating Global Alliance lodging partner that is discounted from regular tour rates.

Valid January 1 - April 16, 2023. Super early purchase price deadline is August 31; Early purchase price deadline is October 31, 2022; Regular purchase price deadline is January 31, 2023.\*\*\*

## 30-Day Rental

For the price of a seven-day rental, test drive the latest gear for 30 days. As always, enjoy access to free transfers and storage when you rent with Four Mountain Sports—our mountain authority for gear rentals with nine convenient locations. \*\*\*\*

Valid for 30-Day rental period 2022-2023 Season (November 24, 2022 - April 16, 2023).

**Purchase Packages: For a list of contracted Australian Tour Operators please visit [aspensnowmass.com/international](https://aspensnowmass.com/international).**

**TERMS AND CONDITIONS:** All Promotions must be booked with a contracted tour operator, and packaged with discounted lodging from the Global Alliance. Promotions are not valid on existing reservations and promotions cannot be combined. All promotions must be booked by stated book by dates, or if inside the book by deadline, then they must be booked at least seven days prior to arrival.

- \* Number of rental days and lift ticket days must be the same.
- \*\* The SKI30 product is available for children/teens/seniors at a discounted rate and must be bundled with seven+ nights of discounted lodging at a participating Global Alliance property. Aspen Snowmass Guarantee (In-Resort Credit on unused days) does not apply to this product.
- \*\*\* The SKI10 product is available for children/teens/seniors at a discounted rate and must be bundled with discounted lodging at a participating Global Alliance property.
- \*\*\*\* Up to 30 consecutive days of Premium Ski or Snowboard rental equipment + helmet from Four Mountain Sports. Requirements: 30-Day rental is non-refundable/non-transferable once rental period starts. Promotional lift ticket package is not required to book 30-Day Rental. Includes free overnight storage and transfers. Insurance is NOT included. A credit card will be required at pickup for security against equipment.

DECEMBER	JANUARY	FEBRUARY	MARCH	APRIL
UP TO 40% OFF TOUR	SHEER BLISS	SHEER BLISS	SHEER BLISS	UP TO 40% OFF TOUR
	PERFECT STORM	PERFECT STORM	PERFECT STORM	
	KIDS SKI FREE	KIDS SKI FREE	KIDS SKI FREE	KIDS SKI FREE
	SKI30 / SKI10	SKI30 / SKI10	SKI30 / SKI10	SKI30 / SKI10



For more information visit [aspensnowmass.com](https://aspensnowmass.com)



ASPEN MOUNTAIN

Rising from the vibrant heart of downtown Aspen, Aspen Mountain boasts skiing and riding that goes above and beyond.

November 24, 2022 - April 16, 2023  
Summit: 11,212 ft / 3,418 m  
Vertical Rise: 3,267 ft / 996 m



ASPEN HIGHLANDS

Adored by locals, Highland Bowl hikers, and Cloud Nine revelers alike, Aspen Highlands is a mountain born different.

December 10, 2022 - April 9, 2023  
Summit of Highland Bowl: 12,392 ft / 3,777 m  
Summit: 11,675 ft / 3,559 m  
Vertical Rise: 3,635 ft / 1,108 m



BUTTERMILK

Miles of groomers, beginner-friendly trails, or terrain parks for the pros—no matter how you choose to play, it's all-day recess.

December 17, 2022 - April 2, 2023  
Summit: 9,900 ft / 3,018 m  
Vertical Rise: 2,030 ft / 618 m



SNOWMASS

The potential is unlimited: unmatched vertical descent, a cozy resort town, and an easy-going connection to it all.

November 24, 2022 - April 16, 2023  
Summit of The Cirque: 12,510 ft / 3,813 m  
Summit of Big Burn: 11,835 ft / 3,607 m  
Vertical Rise: 4,406 ft / 1,343 m



City of Aspen

A small town with a big heart, this once-rustic mining community has become one of the world's most famous cultural centres. Rich with opportunities for recreation, art, dining, and shopping, Aspen is modern with hints of mountain nostalgia down every street, and at every trailhead. People of all nations, ages, and abilities come to revel in an attitude that blends laid-back and luxurious, athletic and artful.

Aspen/Pitkin County Airport

Touch down at Aspen's slopeside airport and be within 15 minutes of all four incredible mountains via a free and efficient bus system. With up to 218 flights weekly, the Aspen/Pitkin County Airport (ASE) is only 4.8 km from downtown Aspen and 9.7 km from Snowmass Village. Aspen is one of Colorado's most accessible Rocky Mountain destinations.



Snowmass Village

Just down the road from world-famous Aspen rests cozy Snowmass Village, delivering dining, shopping, and entertainment for all ages, all day and evening long. Snowmass is the perfect mountain for families and groups, as 95% of its lodging is ski-in/ski-out and the bus system makes getting around a breeze. The Treehouse Kids' Adventure Center mixes indoor and on-snow play for youngsters, and entire families can enjoy activities mid-mountain at Elk Camp, including the Breathtaker Alpine Coaster.



# Aspen

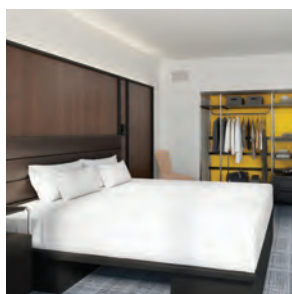
Lodging is the cornerstone to a comfortable and convenient vacation. Whether it's a slopeside luxury suite near Aspen Mountain's Silver Queen Gondola, a ski-in/ski-out condo in Snowmass, or a chic hotel close to everything, the lodging in Aspen Snowmass is unmatched.



## Aspen Alps

\$\$\$

info@aspenalps.com  
aspenalps.com



## Aspen Meadows Resort

\$\$\$

reservations@aspenmeadows.com  
aspenmeadows.com



## Aspen Mountain Lodge

\$\$-\$\$\$

aml@aspenmountainlodge.com  
aspenmountainlodge.com



## Aspen Square Condominium Hotel

\$\$\$-\$\$\$\$

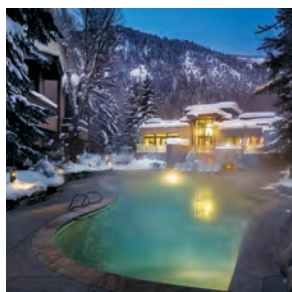
reservations@aspensquarehotel.com  
aspensquarehotel.com



## Frias Properties of Aspen & Independence Square

\$-\$\$\$\$

Reservations@FriasProperties.com  
FriasProperties.com



## The Gant

\$\$\$-\$\$\$\$

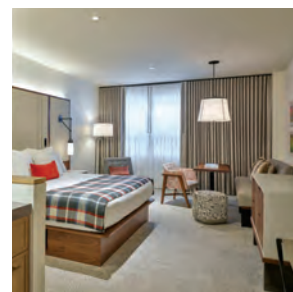
reservations@gantaspen.com  
gantaspen.com



## Hotel Jerome

\$\$\$\$

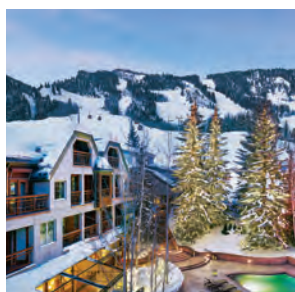
jerome.reservations@aubergeresorts.com  
hoteljerome.aubergeresorts.com



## Limelight Hotel Aspen

\$\$\$-\$\$\$\$

reservations@limelighthotels.com  
limelighthotels.com



## The Little Nell & Residences at The Little Nell

\$\$\$\$

stay@thelittlenell.com  
thelittlenell.com



## McCartney Property Management

\$\$-\$\$\$\$

res@mccartneyproperties.com  
mccartneyproperties.com



## The St. Regis Aspen Resort

\$\$\$\$

asexr.reservations@marriott.com  
stregiaspen.com



## W Aspen

\$\$\$-\$\$\$\$

WAspen.reservations@Whotels.com  
waspenhotel.com



# Snowmass Village

Staying in Snowmass is a treat for anyone looking for a true mountain getaway. With boundless ski-in/ski-out accommodations, activities for the whole family in Snowmass Village and on-mountain, and over 3,300 skiable acres of terrain at Snowmass alone, booking a visit to Snowmass is an ideal winter vacation.



## The Crestwood Condominiums

\$\$-\$\$\$\$

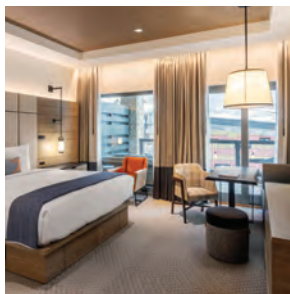
res@thecrestwood.com  
thecrestwood.com



## Destination Residences Snowmass

\$\$-\$\$\$

booksnowmass@destinationhotels.com  
destinationsnowmass.com



## Limelight Hotel Snowmass

\$\$\$-\$\$\$\$

reservations@limelighthotels.com  
limelighthotels.com



## Snowmass Mountain Lodging by East West Hospitality

\$\$-\$\$\$\$

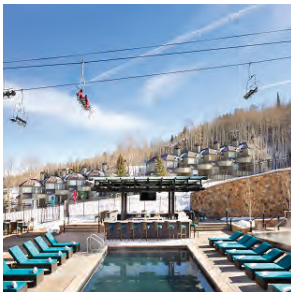
snowmassres@eastwest.com  
snowmassmountainlodging.com



## Timberline Condominiums

\$\$-\$\$\$

reservations@thetimberline.com  
thetimberline.com



## Viceroy Snowmass

\$\$\$-\$\$\$\$

reservations@viceroysnowmass.com  
viceroysnowmass.com



## Woodrun V

\$\$\$-\$\$\$\$

info@woodrunv.com  
woodrunv.com



## Laurelwood & Interlude Condominiums

\$\$-\$\$\$

laurelwood@laurelwoodcondominiums.com  
laurelwoodcondominiums.com

ECONOMY \$ MODERATE \$\$ DELUXE \$\$\$ LUXURY \$\$\$\$



## Basalt

## Element Basalt

\$\$-\$\$\$

Kelly.dean@elementbasaltaspen.com  
Elementbasaltaspen.com

**TO BUY PACKAGES** that include airfare from your home country, visit: [aspensnowmass.com/international](https://aspensnowmass.com/international) for a list of our preferred travel partners.

