



ASPEN
SNOWMASS

WINTER

2023 - 2024

FOUR MOUNTAINS. ONE LIFT TICKET. ENDLESS MEMORIES.



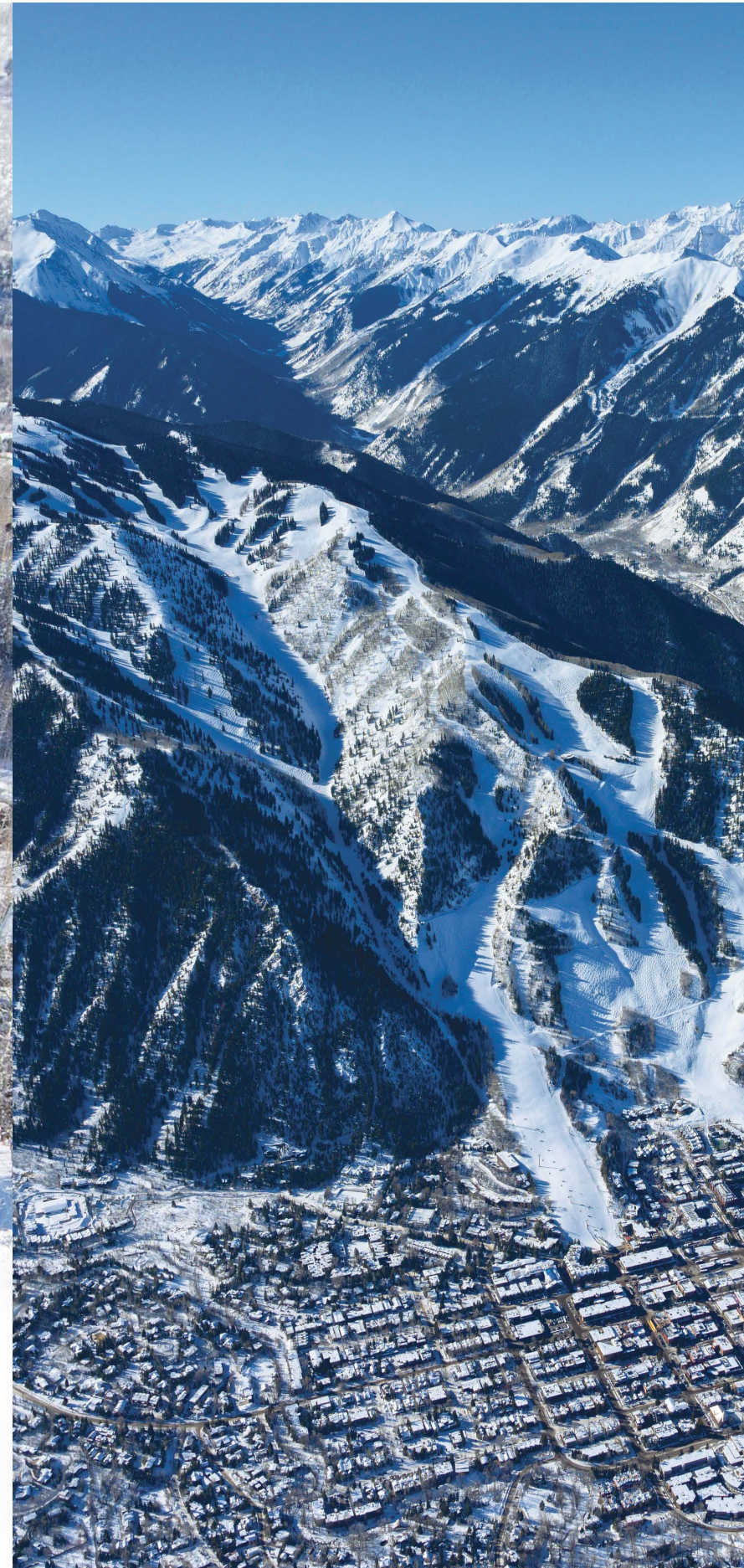
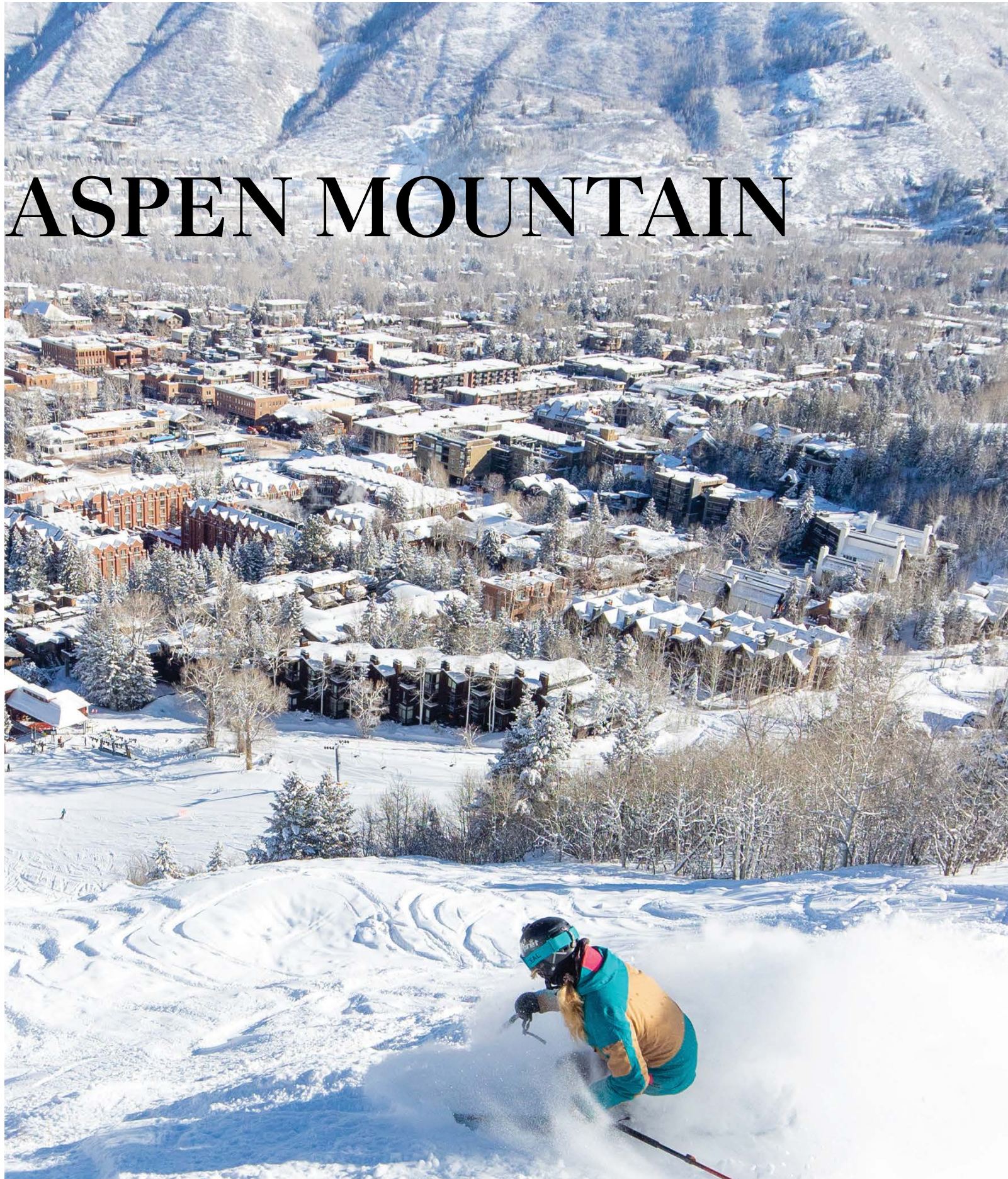
Aspen Snowmass is a community like no other at the crossroads of nature, culture, and recreation. Here, four mountains and two unique towns—all within 15 minutes of one another—engage the mind, body, and spirit. All inviting you to live boldly, artfully, and optimistically and leaving a lasting impact long after you return home.

We Make It Easy. At Aspen Snowmass, the difference is in the details. Not only do we have four extraordinary mountains, but we prioritize the ease with which you can enjoy them all.

- Our complimentary shuttles can take you between all our mountains and both towns until 2am.
- Our rental shops will transfer your skis from one mountain to the next, allowing you and your friends to après ski at Ajax Tavern or relax in the hot tub in your ski-in/ski-out condo on Snowmass.
- Our Pickup Boxes dotted throughout the resort and our App ensure effortless access to lesson, ticket, and rental purchases so you can spend more time carving lines and less time waiting in them.
- Our airport is centered between both towns and with most lodges offering complimentary airport transfers, you're sure to receive the warm welcome you deserve.
- And let's not forget what a difference the right gear can make. Four Mountain Sports is the only ski shop located at each of our base areas, so dialing in your gear—and transferring it to wherever you feel like skiing or riding tomorrow—is the priority it should be.



ASPEN MOUNTAIN



The crown jewel, locally known as “Ajax,” Aspen Mountain is where it all began. A storied past meets a forward-thinking perspective in a town that pulsates with people and experiences. A true legend of a mountain that will take you above and beyond any other skiing or riding experience, Aspen Mountain welcomes everyone with a taste for adventure.



ASPEN MOUNTAIN

EXPLORE PANDORA'S

What's better than skiing and riding at Aspen Mountain? More skiing and riding at Aspen Mountain, of course. Beginning in the 2023-2024 season, Ajax is ushering in an additional 153 skiable acres (62 ha) of upper, northeast-facing terrain, growing the town mountain by 22 percent. The area, called Pandora's, is accessed via a brand-new high-speed quad and includes 1,220 vertical feet or 372 meters of groomed trails and glades ranging from intermediate to advanced, plus an extension of favorite expert runs such as Walsh's, Kristi, and Hyrup's.

The Pandora's area is a not-so-new frontier for many—a local stash of side country that is packed with history, stories of secret steep turns, and ski town intrigue. In the 1970s, Aspen Mountain Patroller Tim Howe knew opening access to this area could be like opening "Pandora's Box"—driving ski bums near and far on an eternal chase for snow-induced bliss and unleashing the inevitable pandemonium around that ever-present quest for untouched powder.

Aspen Snowmass took this kind of lore into consideration when carefully naming the trails in the area. It was a perfect opportunity to pay homage to the zone's people, patrol, history, mining roots, and exceptional terrain—as well as playing into the Greek mythology of Pandora's Box. You'll see "Temptation" from Pandora's Box, and "Legal Tender", after an old mining claim. One of the chutes is named "Eek!", a nickname for beloved patroller, Eric Kinsman.

"I had this boss, Eric Kinsman, and he sort of let me start kicking around back here around 1994 or 1995," says 37-year Ski Patrol veteran Scott Scharin after a sunny lap through nearly knee-deep fluff on Harris Wall, a healthy pitch stippled with pine trees on the far looker's left side of the new terrain addition. "It was during that time that we started to really get a good idea

of where a chairlift could go and how this terrain could work. After all these years, it's cool to see us really getting it done and doing it right so people can feel safe exploring these woods."

The Pandora's project planning and execution included a whole systems approach—considering environmental health, community impact, and skiers' experience. "The Pandora's terrain gives lift-serviced access to the snowiest terrain on Aspen Mountain," says Senior Project

The Pandora's project planning and execution included a whole systems approach—considering environmental health, community impact, and skiers' experience.

Manager Mak Keeling, who was key in the development of the area. "It will double the skiable acres above 10,000 feet (3,048 m) in elevation, allowing everyone to spread out and enhancing the experience on Aspen Mountain."

This will be Aspen Mountain's first significant addition since the opening of the Silver Queen Gondola in December of 1985. "The steep chutes and the long glades are unlike anything else on Aspen Mountain, and the views of Independence Pass are second to none," says Keeling. Skiers will feel like they're deep in the backcountry (though only minutes away from town or a meal at the Sundeck) and hopefully, like they've become part of this mountain's layered story.

Both its history and renegade personality are proof that this mountain was born different.

Race down its perfectly groomed, wide-open cruisers. Charge its technical tree runs off Deep Temerity. Hike the ridge and ski or ride the 270-acre (109-ha) Highland Bowl, then toast the day at the energized après experience found only at Cloud Nine Alpine Bistro. The options are endless on this maverick mountain.



ASPEN HIGHLANDS

A MAVERICK AT WORK



Lori Spence moved to Aspen in 1985 after ski patrolling while in college in Arizona. Right away, she was hired on to the Aspen Highlands Ski Patrol team, as one of the only female patrollers at the time. Today, she's Ski Patrol Director on the same mountain where she started 38 years ago—as the first woman to hold the title at Aspen Highlands.

Every day, she rides up the lifts with her avalanche dog, Meka, one of many she has trained over the years. Her job is based out of the Ski Patrol shack situated at the top of Loge Peak where she has easy access to the legendary Highland Bowl. "Hiking the Bowl gives me more opportunities to chat with guests or time to reset, regroup, and move on to the next missions," says Spence. Then, there's the joy she witnesses as guests experience descending the Bowl—terrain that is hard to find in-bounds at other resorts. "The ski off the top is world-class, with all aspects of terrain available."

Spence, a mother of two sons and a survivor of breast cancer, says she loves reading about, listening to, and working with "high-drive women" in the outdoor industry. "The women I work with on Patrol

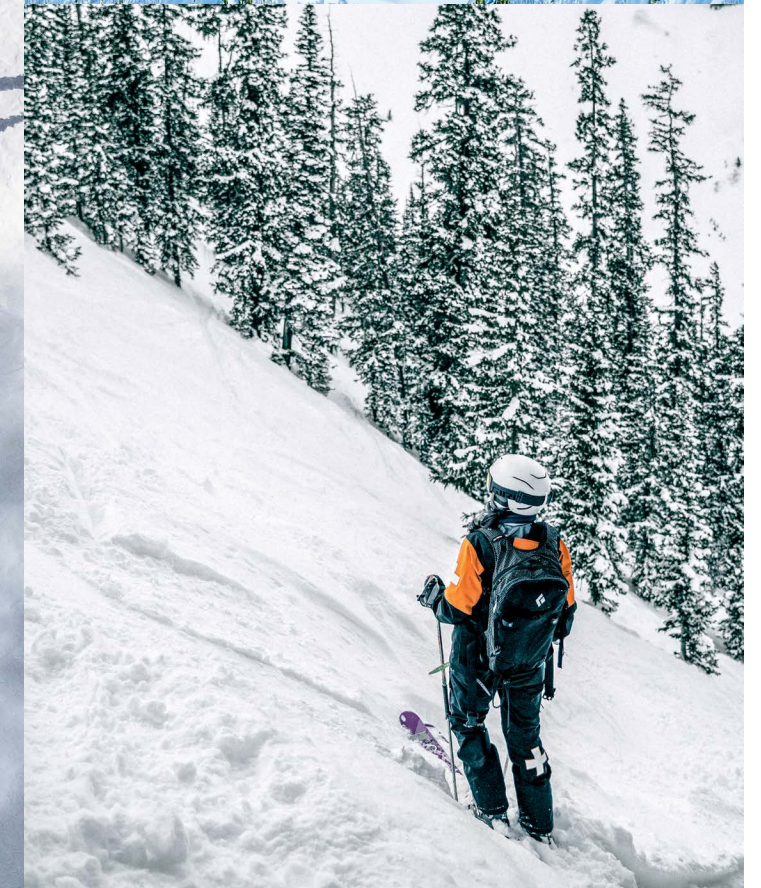
are outstanding and each bring so many talents." Reflecting on having been the only female on the Patrol team at one point, Spence says, "it's nice to have five others on the Aspen Highlands Patrol currently—the most Highlands has ever had on staff at once."

Aspen Highlands offers a wide range of experiences, from spraying bubbly and eating delicious fare at Cloud Nine Alpine Bistro to exploring Highland Bowl. But Spence says the co-existence of these adventurous elements are what makes Aspen Highlands one-of-a-kind. And, both offer next-level views of the Maroon Bells.

"Cloud Nine is the location of our old patrol headquarters," she muses. "I have many good memories from the old days and have spent many afternoons on the deck taking in good company and views." Now, guests get to savor the special views and vibes offered by the distinct venue.

"I enjoy going to work," Spence says when talking about her home mountain. "I work with my friends and visit with guests who are friends. I get my exercise and I'm challenged often. I work with a great team of men and women and embrace the young energy so many of them bring. And every day is different."

I work with a great team of men and women and embrace the young energy so many of them bring. And every day is different.



BUTTERMILK



Made for learners, mastered by professionals, enjoyed by all. Buttermilk is a playground packed with greens, blues, and stunning views. An easy-going mountain designed to help children and beginners fall in love with winter sports on flowing, forgiving runs, Buttermilk's same friendly terrain is the perfect landscape for professional athletes to win global titles at world-class events like X Games Aspen. Welcome to all-day recess.





BUTTERMILK

AN EVEN BETTER BUTTERMILK

Whether it's a bluebird morning or a powder day with fat snowflakes piling up, the scene at Buttermilk is often the same—warm, laidback, and extremely welcoming to all. Originally developed in 1958 as a learning area, Buttermilk now sees a diverse group of families and international guests all learning to love sliding on snow. And, with a mountain and base area so easy to navigate, focusing on the fun has never been easier.

Buttermilk Mountain Lodge offers a cozy, inviting atmosphere to rest and refuel amidst its high-beam ceilings and views of the mountain.

Completed in the 2022-2023 season, Buttermilk's newly transformed base area includes a 9,000+-square-foot (836+ sqm) fully electric skier services building, creating a sustainable and intuitive one-stop shop for guests to roll in, purchase tickets, secure a ski or snowboard lesson, dial in gear rentals, shop for the latest outerwear, and get out on the slopes in no time.

"Buttermilk has always had a reputation for putting the fun in the fundamentals of skiing and riding," says Leigh Louis, lifelong Colorado skier and Marketing Manager for Mountain Sales and Schools. "The new Guest Services building will act as the headquarters to cater to the accessibility of that experience."

Just steps away from the new Guest Services building in the base area is a fully renovated Buttermilk Mountain Lodge—formerly known as Bumps. Buttermilk Mountain Lodge offers a cozy, inviting atmosphere to rest and refuel amidst

its high-beam ceilings and views of the mountain. Everyone in the family can fill up on Italian street food specialties like made-to-order pastas and salads, fresh grill selections, and house-made soups. And après? The scene just got its new favorite stomping ground with The Backyard, an outdoor hangout with heated seating and the perfect patio space to grab a cocktail and continue all-day recess.

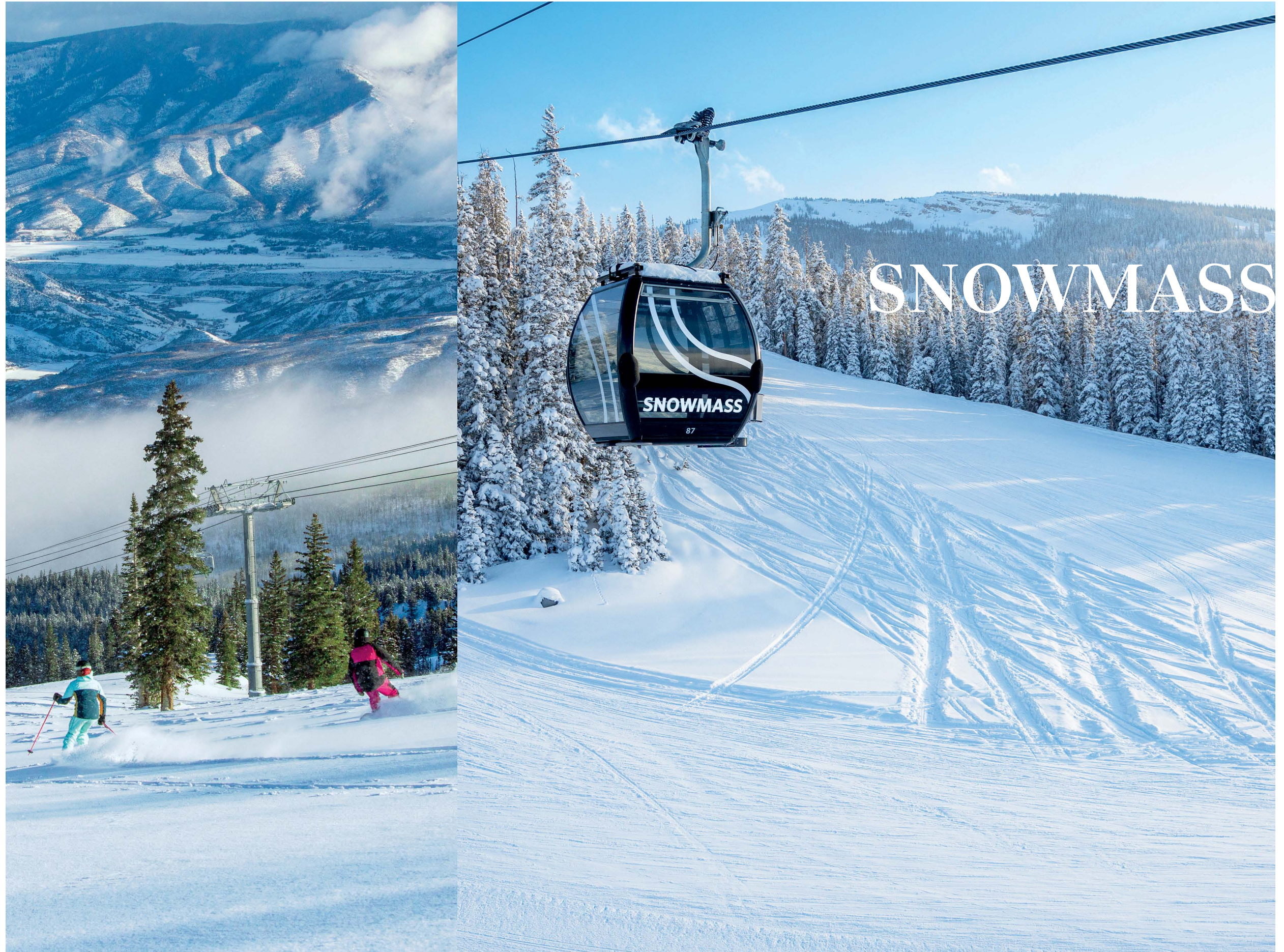
Buttermilk's base area glow-up only enhances the perks this mountain has always provided. Wide, swooping blue and green trails, incredible views of the high peaks from the summit, a terrain park for every level of rider and ripper, and low-angle tree runs perfect for finding flow—it's all here.

"The abundance of varied beginner terrain, the accessible parking just off the road, and the fact that it's right in between Aspen and Snowmass" are a few of Buttermilk's conveniences, listed by Louis. "This mountain just simply takes the pressure off people." And, with only three main lifts—a fourth if you count the free-to-ride Panda Peak beginners lift—it's hard to get lost while exploring the place.

When people come to Buttermilk to learn, they often come back for more," says Louis, who also notes that the Aspen Snowmass Ski & Snowboard School has a ninety percent retention rate with its Pros, which is much higher than other resorts. From kiddos learning at The Hideout—one of North America's most renowned centers for ski and snowboard education—to folks trying out the terrain park or giving uphill a go for the first time, at Buttermilk, it's all about learning and playing. Come see for yourself this winter.



Our largest mountain is vast in both charm and terrain. Snowmass' wide-open layout creates space for every visitor to find their dream getaway. Snowmass Village is a cozy resort town delivering dining, shopping, and entertainment for all ages, all day and evening long. And on mountain, a myriad of offerings for every season—including more than 3,300 acres (1,336 ha) of skiable terrain, the Breathtaker Alpine Coaster, tubing, the Treehouse Kids' Adventure Center, and more—means unlimited potential for the entire family to find ways to play.



UNLIMITED POTENTIAL FOR EVERYONE

Snowmass opened as an official ski resort in 1967. As the story goes, on one reconnaissance for the area, former ski racer and developer Bill Janss had a plane land him at the top of what would later become Big Burn run. He proceeded to make pristine turns in untracked powder—immediately convinced it would be the perfect place to build a ski resort. Today, Snowmass is larger than all three other mountains at Aspen Snowmass combined. With 96 ski trails boasting 4,406 vertical feet (1,343 m) and 3,332 acres (1,348 ha) of skiable terrain, the mountain—and the adorable village that rests below it—has something for every kind of visitor.

We believe anyone can ski. When access is equal, the possibilities are limitless.

Headquartered at the base of Snowmass, Challenge Aspen is a key component to making everyone feel welcome. Established in 1995 in Snowmass as an adaptive ski program for individuals with spinal cord injury, Challenge Aspen now offers year-round experiences in the outdoors across all four mountains at Aspen Snowmass and in the surrounding Valley.

Since the organization's inception, Challenge Aspen has served more than 16,500 participants and has awarded \$3.1 million in scholarships to ensure there are never barriers in participation. "We believe anyone can ski," says Lindsay Cagley, Challenge Aspen's CEO. "When access is equal, the possibilities are limitless."

"The mountain gave us a common ground," says Mariana Canales. Mariana and her husband, Luis Lugo Platt, have four children, two of whom have a disability.

For the Lugo Canales family, traveling all the way from Mexico can be complicated; but a trip to Snowmass where everyone can engage with the mountain was made possible with Challenge Aspen. "They put everything together, including equipment and ski instructors," adds Luis.

"I'm always impressed by the various types of equipment the Challenge Aspen team utilizes to get folks out to enjoy the mountain," says Snowmass Mountain Manager Susan Cross, who oversees operations across the mountain. During their winter visit, Emi and Juan Lugo Canales were able to ride around the mountain in sit skis, taking in the Colorado blue skies and feeling the edges of their skis lay into the snow beneath them as their instructors pushed them over rollers on the wide-open groomers that cover Snowmass.

"This family traveled all the way from Mexico with four young kids, two of them using wheelchairs," says Erin Loftus, Adaptive Instructor and Volunteer Manager for Challenge Aspen. "Getting them out on the hill shows them and their family what they're fully capable of and lets everyone know that a disability does not mean you're not able to participate in outdoor recreation."

"We're always looking for family activities to enjoy all together, and we never thought that skiing could be one of those activities," says Marianna. "Challenge Aspen has made our dream come true."

At the end of each day, skiers and riders weave their way to the base of this massive mountain that sits beneath Mount Daly. "I love seeing the smiling faces after spending an amazing day on the slopes," says Cross. There's an opportunity for everyone regardless of physical abilities—true, unlimited potential.



ASPEN MOUNTAIN

Rising from the vibrant heart of downtown Aspen, Aspen Mountain boasts skiing and riding that goes above and beyond.

November 23, 2023 — April 21, 2024
Summit: 11,212 ft / 3,418 m
Vertical Rise: 3,267 ft / 996 m

ASPEN HIGHLANDS

Adored by locals, Highland Bowl hikers, and Cloud Nine revelers alike, Aspen Highlands is a mountain born different.

December 9, 2023 — April 7, 2024
Summit of Highland Bowl: 12,392 ft / 3,777 m
Summit: 11,675 ft / 3,559 m
Vertical Rise: 3,635 ft / 1,108 m

BUTTERMILK

Miles of groomers, beginner-friendly trails, or terrain parks for the pros—no matter how you choose to play, it's all-day recess.

December 9, 2023 — March 31, 2024
Summit: 9,900 ft / 3,018 m
Vertical Rise: 2,030 ft / 618 m

SNOWMASS

The potential is unlimited: unmatched vertical descent, a cozy resort town, and an easy-going connection to it all.

November 23, 2023 — April 14, 2024
Summit of The Cirque: 12,510 ft / 3,813 m
Summit of Big Burn: 11,835 ft / 3,607 m
Vertical Rise: 4,406 ft / 1,343 m

City of Aspen

A small town with a big heart, this once-booming mining community has become a well-known cultural center. Aspen is a modern city known for its diverse art, dining, and shopping scene, as well as hints of mountain nostalgia down every street and at every trailhead. After a day on the slopes, all trails lead to Ajax Tavern, where après ski parties may lead to an elegant restaurant, vibrant nightclub, or a cozy seat in front of a roaring fire. People of all nations, ages, and abilities come to revel in a community that is both laid-back and luxurious, and athletic yet artful.

Aspen/Pitkin County Airport

Touch down at Aspen's slopeside airport and be within 15 minutes of all four incredible mountains via a free and efficient bus system. With up to 218 flights weekly, the Aspen/Pitkin County Airport (ASE) is only 3 miles (4.8 km) from downtown Aspen and 6 miles (9.7 km) from Snowmass Village. Aspen is one of Colorado's most accessible Rocky Mountain destinations.



Snowmass Village

Just down the road from world-famous Aspen rests cozy Snowmass Village, delivering dining, shopping, and entertainment for all ages, all day and evening long. Snowmass is the perfect mountain for families and groups, as 95% of its lodging is ski-in/ski-out and the bus system makes getting around a breeze. The Treehouse Kids' Adventure Center mixes indoor and on-snow play for youngsters, and entire families can enjoy activities mid-mountain at Elk Camp, including the Breathtaker Alpine Coaster.

To Basalt

The Element is perfectly centralized just 18 miles (30 km) from the Aspen/Pitkin County Airport. It can be found nestled within restaurants, Whole Foods, and boutique shops in the heart of the Willits Town Center.

To Glenwood Springs

37 miles (60 km) from the Aspen/Pitkin County Airport to the newly remodeled, historical Hotel Colorado, where nearby boutique shopping and natural hot springs are only steps away.

Vacation Packages

Aspen Snowmass offers packages with incredible value throughout the season, helping you get the most out of your lift ticket, lesson, rental, and lodging purchases. Our seasoned agents will assist with all aspects of trip planning and ensure your vacation meets your every expectation.

Sheer Bliss — Early Offer

Rent your gear and find bliss this winter. Receive \$99 lift tickets with the purchase of two+ days Premium Adult Ski or Snowboard Package rental from Four Mountain Sports.

Valid January 1 – April 1, 2024. Book by October 31, 2023.*

Perfect Storm — A Free Day

Stay longer, play more, and soak in the fun on and off the mountain with winter's Perfect Storm. Book a minimum of four days of skiing with lodging and receive an additional lift ticket for free. Offer available for adults only, not applicable to child, senior, or teen pricing.

Valid January 1 – April 1, 2024. Book by the 15th of the month for arrivals in the following month (i.e., book by January 15, 2024 for all February 2024 arrivals).

Kids Ski Free — Just Rent Their Gear From Four Mountain Sports

Revel in the season and harness your kids' love for winter while avoiding the hassle of traveling with their gear. At Aspen Snowmass, kids ski free when you rent their gear from Four Mountain Sports. Rent your children's equipment (ages 7 to 12) for a minimum of two days and we'll provide complimentary lift tickets for the same number of days.

Valid January 1 - April 21, 2024. No adult purchase required. Kids 6 and under ski free. Book by the 15th of the month for arrivals in the following month (i.e., book by January 15, 2024 for all February 2024 arrivals).

SKI10

Take advantage of 10 consecutive days of skiing and riding at the best price. Only valid for 10 days from the first day of skiing, best for guests staying 8-10 nights total. Minimum 4 nights discounted lodging at a Global Alliance Property.

Valid January 1 – April 21, 2024. Early purchase price deadline is October 31, 2023; regular purchase price deadline is January 31, 2024.**

SKI30 — Perfection Is Worth The Journey

Lock in unlimited skiing, riding, and leisurely mountain musings for 30 consecutive days while saving with SKI30. Discover what the four mountains of Aspen Snowmass—Aspen Mountain, Aspen Highlands, Buttermilk, and Snowmass—have to offer, each with their own personality—and secrets. Ski as much (or as little) as you like. SKI30 gives you the incredible flexibility to enjoy your vacation at whatever pace feels right.

Valid January 1 – April 21, 2024. Super early purchase price deadline is August 31, 2023; regular purchase price deadline is January 31, 2024.***

30-Day Rental

Test drive the latest gear for 30 days for the price of a seven-day rental, all season long. As always, enjoy access to free transfers and storage when you rent with Four Mountain Sports—our mountain authority for gear rentals with nine convenient locations across all four mountains.

Valid for 30-Day rental period 2023-2024 Season (November 23, 2023 – April 21, 2024).****

TERMS AND CONDITIONS: All Promotions must be booked through a contracted tour operator and packaged with discounted lodging (valued at a minimum discount of 15%) from the Global Alliance. Promotions not valid on existing reservations and promotions cannot be combined. All promotions must be booked by stated book-by dates, or if inside the book-by deadline, they must be booked at least 7 days prior to arrival.

* Number of rental days and lift ticket days must be the same.

** Aspen Snowmass Guarantee (in-resort credit on unused days) and in-resort credit do not apply to this product.

*** The SKI30 product is available for children/teens/seniors at a discounted rate and must be bundled with seven+ nights of discounted lodging at a participating Global Alliance property. Aspen Snowmass Guarantee (in-resort credit on unused days) does not apply to this product.

**** Up to 30 consecutive days of Ski or Snowboard rental equipment + helmet from Four Mountain Sports. Requirements: 30-Day rental is non-refundable/nontransferable once rental period starts. Promotional lift ticket package is not required to book 30-Day rental. Includes free overnight storage and transfers. Insurance is NOT included. A credit card will be required at pickup for security against equipment.

Lift Tickets

A single lift ticket unlocks access to all four mountains—Aspen Mountain, Aspen Highlands, Buttermilk, and Snowmass. Booking in advance is the best way to save and enjoy a seamless experience once you arrive.

Aspen Snowmass Guarantee

We guarantee you have nothing to lose, even if you don't use all your days.

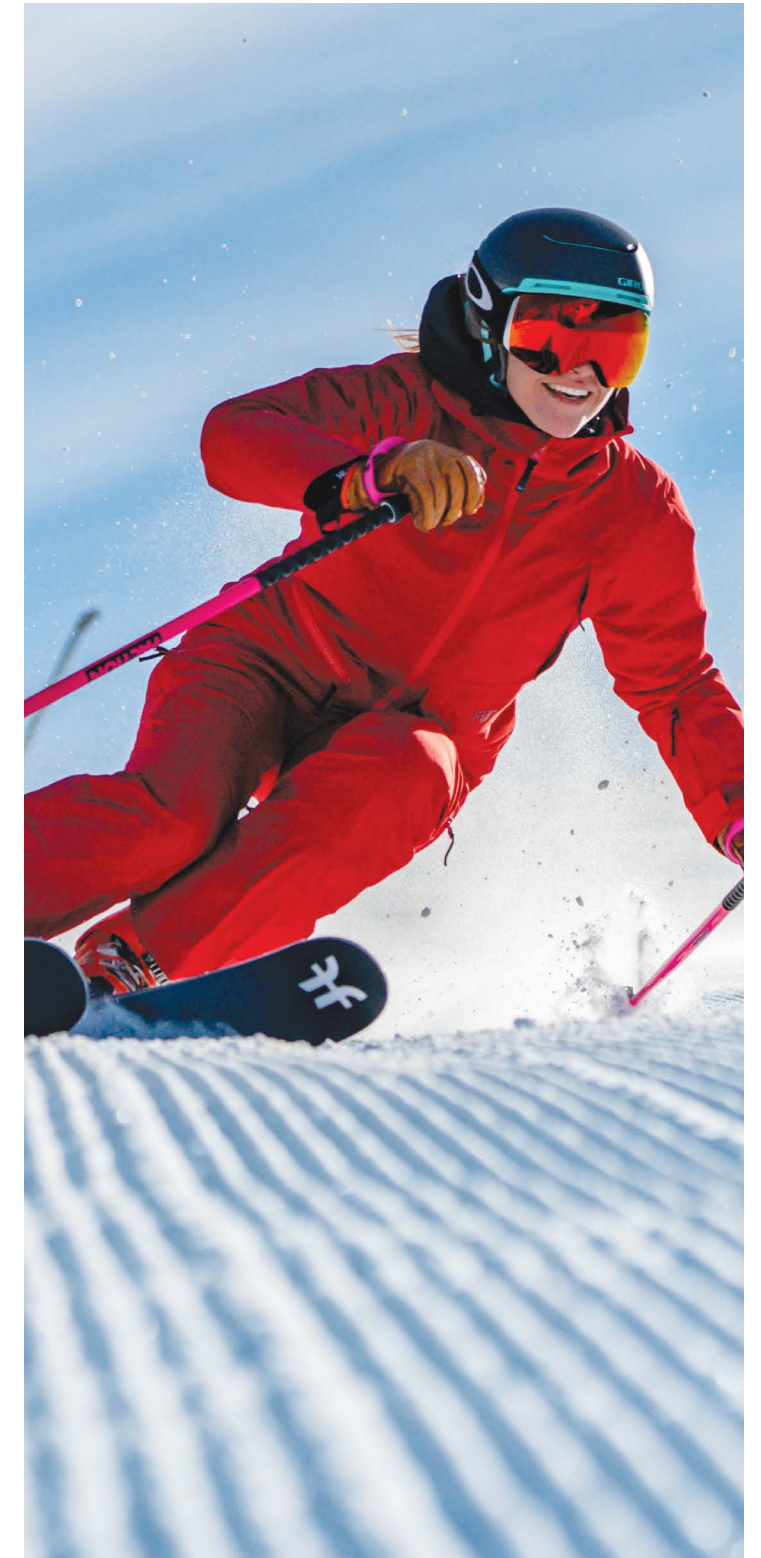
This program provides you with the opportunity to return partially used lift tickets within 14 days of expiration to receive an in-resort credit toward future Aspen Snowmass purchases. When unused days on lift tickets are put into an in-resort account, you receive monetary credit for the per day price of the unused days. You have the current season plus the season immediately following to use the in-resort credit. This credit may be used toward purchases of lift tickets, season passes, Ski & Snowboard School lessons, on-mountain activities, and rentals and tuning at Four Mountain Sports (credit is not valid on merchandise purchases). In-resort credit may be transferred to someone else; simply inform Aspen Snowmass who will be using the credit and we will put it in their name.

More Deals

- Children six and under ski/snowboard FREE!
- Guests ages 70+ are eligible for a Silver Pass (a highly discounted season pass).
- Discounted lift ticket, equipment rental, and Ski & Snowboard School pricing is available to groups of 20 or more (lift ticket start date must be the same).
- Purchasing lodging packages through a contracted travel partner will offer the best value: stayaspensnowmass.com; 855-259-4270. International Guests aspensnowmass.com/international.

Pickup Boxes

Skip the ticket office by purchasing your lift tickets and passes in advance. Use the Pickup Boxes located at the Aspen airport and base of each mountain to print your Aspen Card upon arrival.



Aspen Snowmass App – Your On-Mountain Concierge

Once in-resort, download the App for access to everything you need to enjoy your on-mountain experience. Add additional days to your lift ticket, purchase lessons and rentals, track stats, check parking availability and base lift wait times, access in-App rewards and Passholder Benefits, and more.

	DECEMBER	JANUARY	FEBRUARY	MARCH	APRIL
UP TO 40% OFF TOUR	❄️	—	—	—	❄️
SHEER BLISS	—	❄️	❄️	❄️	—
PERFECT STORM	—	❄️	❄️	❄️	—
KIDS SKI FREE	—	❄️	❄️	❄️	❄️
SKI10	—	❄️	❄️	❄️	❄️
SKI30	—	❄️	❄️	❄️	❄️

Aspen Snowmass Ski & Snowboard School

Our Guarantee

Whether leading you to untouched lines or serving up insider tips on the local scene, we guarantee our Pros will have you loving every moment of your day. We don't take this promise lightly, which is why we created Our Guarantee. If you're not completely satisfied with your experience, the next one is on us.

MAX 5 Group Lessons & Clinics

Learn from the best in an intimate setting. MAX 5 Adult First Time Lessons, Adult Group Lessons & Clinics, and Child & Teen Group Lessons for ages 3 through 17 are all designed to never exceed groups of more than five people.

Private Lessons

Gain new skills while carving lasting connections during a Private Lesson this season. Our Pros are your guide to finding your inside edge and the inside scoop on everything from discovering fresh corduroy and powder fields to learning the local scene—helping you love the day and yielding tales for years to come.

Guided Experiences

Level up your day with your crew and cruise our legendary terrain on your own terms with a Guided Experience. Ski our mountains like a local with your own private guide while enjoying priority lift access and flexible meeting times.

Due to high demand and the potential for selling out, advance reservations are strongly recommended for all Ski & Snowboard School products.

Rent Better, Ride Better

Four Mountain Sports has you covered.

At Four Mountain Sports, we make it easy to rent the gear so you can own the memory. With 9 convenient rental locations dotted across our two towns, and as the only provider with a location at each mountain, Four Mountain Sports offers the most comprehensive gear rental and retail service in the area.

Delivery

Four Mountain Sports will conveniently deliver and pick-up your ski and snowboard rentals directly to and from your home or hotel in the Aspen and Snowmass Village area. The one-time delivery fee includes a personalized equipment fitting for up to 5 rental packages.

Free Overnight Transfers & Storage

Four Mountain Sports eliminates the hassle of hauling gear to and from the slopes by including free equipment transfers and storage across all four Aspen Snowmass mountains with each rental.



30,000+

COLLECTIVE HOURS OF TRAINING COMPLETED BY OUR PROS EACH SEASON

1,250+

PROS ON STAFF

20+

NATIONS REPRESENTED BY OUR PROS ON STAFF



Gear Up to Get Out.

- Convenient rental locations at the base of all four mountains
- FREE overnight equipment transfers to each of our four mountains
- FREE overnight or daily equipment storage
- Fittings the same day you arrive (after 2 pm) at no extra charge
- Full tune and repair service



Group Travel

Planning a meeting, corporate retreat, ski club adventure, wedding, family celebration, or grand getaway with friends? Our group sales team can assist with determining the best fit for any occasion at any of our amazing properties. Our team can also help design memorable on-mountain events and outfit your group with lift tickets, lessons, and gear so you can enjoy everything that our four mountains have to offer.

Group Meetings & Events

Aspen Snowmass boasts state-of-the-art meeting facilities with the distinctive ambiance of a mountain town. The mixture of a pristine landscape, a community of thought-leaders, and a culture focused on the fulfillment of each individual's potential makes Aspen Snowmass the ideal place for corporate events of all kinds. World-renowned skiing, shopping, dining, and spas are just the beginning of a destination that truly transforms the mind, body, and spirit. It would be hard to imagine a more spectacular setting for an incentive trip, conference, board meeting, or social event in any season.

To Book Groups or for More Info:
aspensnowmass.com/visit/groups
gsales@aspensnowmass.com, 1-800-772-2597

For groups consisting of 20 or more people, benefits include:



Discounted Lift Tickets

20-40% off window rates depending on dates, size, loyalty and booking pattern



Get 35% Off

equipment rentals when booking in advance with Four Mountain Sports



Group Services

to coordinate on-mountain activities, including picnics, races and more



Mountain Advantage Savings

exclusive discounts on lessons, equipment rentals at Four Mountain Sports, and select on-mountain restaurants



ASPENX

We were born on the mountain, in the heart of Aspen. Our performance wear has been refined to meet the harshest conditions, in places inspired by the technical excellence of our hometown. We believe being an outdoor brand isn't just about what you do outside—it's about the experiences you have that lead to a greater love, respect, and connection with nature.

Rentals, Retail & Café

Exceptionally Local, Extraordinary at Every Turn

Steeped in mountain heritage and conceptualized by artist Paula Crown, ASPENX epitomizes the Aspen lifestyle with technically sound ski performance wear, collaborations with prestige brands, premium rentals, and transformative food and wine experiences to immerse travelers in the best of Aspen.

Located in the heart of downtown Aspen just steps away from the Silver Queen Gondola, ASPENX has transformed the rental experience from a vacation necessity to an enjoyable amenity and slopeside service. With dedicated fitting times, a selection of exceptional gear, and complimentary ski and snowboard storage with the option for overnight equipment transfer, the ASPENX rental experience is one you can look forward to—and the perfect way to kick off your time in Aspen.

Additionally, while you're shopping and getting your rentals fitted, the ASPENX Café offers a seasonal bounty of fresh, local food and beverages to fuel your day on or off the mountain. Sip on Italian espresso, craft beer, or fine wine while a personal rental and retail specialist walks you through everything you need to make the most of your visit.

Experiences - Meet Us On The Mountain

The ASPENX Beach Club, private snowcat trips, summer hiking excursions, adventures led by expert guides, and more—each season unlocks a new way to experience Aspen.



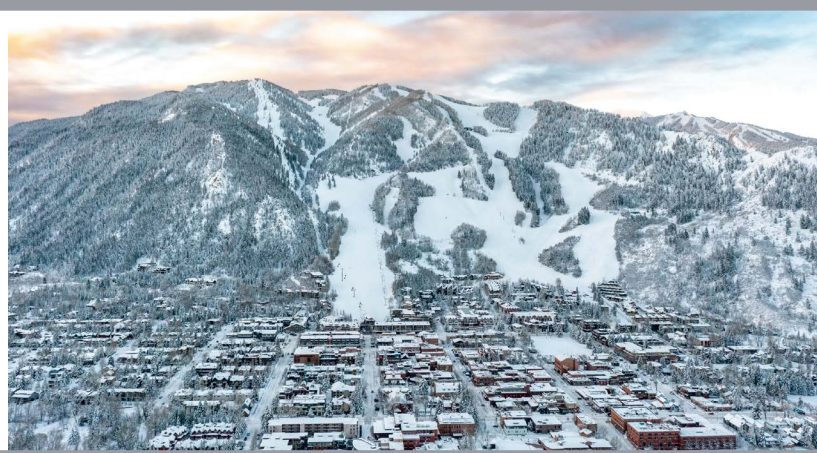
ASPENX

Scan here to explore more.

FEATURED LODGING

ASPEN

Lodging is the cornerstone to a comfortable and convenient vacation. Whether it's a slopeside luxury suite near Aspen Mountain's Silver Queen Gondola, a ski-in/ski-out condo in Snowmass, or a chic hotel close to everything, the lodging at Aspen Snowmass is unmatched.



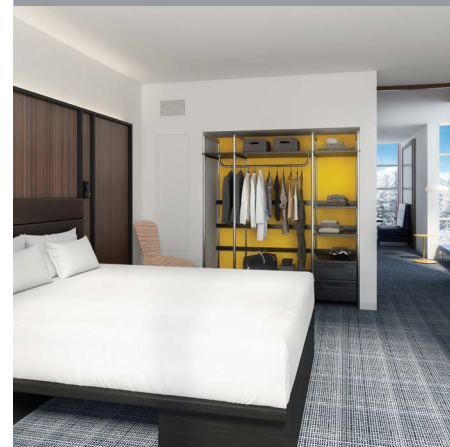
Aspen Alps Condominiums

\$\$\$

700 Ute Avenue, Aspen CO 81611
 aspenalps.com

Come stay at your home away from home at the Aspen Alps condos with all the great services to make your stay extraordinary. We are here to service you! The Aspen Alps has an outdoor pool and hot tub, fitness center and health spa on property and offers transportation services, has a concierge desk, offers grocery and liquor shopping, maid service and Wi-Fi.

- 📍 Right next to Aspen Mountain making it both a ski-in/ski-out property and just steps away from downtown Aspen.
- 🚗 Two-, three- and four-bedroom apartments in the standard, deluxe, and premier categories.



Aspen Meadows Resort

\$\$ - \$\$\$

845 Meadows Road Aspen, CO 81611
 aspenmeadows.com

Aspen Meadows Resort blends nature and art on 40 acres (16 ha) in Aspen's historic West End, surrounded by stunning mountain views. The all-suite property just unveiled a striking renovation of its accommodations that pays homage to the resort's Bauhaus design roots. Suites feature separate living, working, and sleeping areas and amenities include a heated outdoor lap pool, hot tub, steam rooms, tennis courts, and state-of-the-art Health Center. Designed in the Bauhaus style, the Resort offers 98 spacious guest suites featuring floor-to-ceiling windows and new furnishings, 22,000 square feet (2,043 sqm) of meeting and event space, 16 meeting rooms throughout 6 different buildings and a restaurant boasting spectacular views of Aspen's premier ski mountains.

- 📍 West End of Aspen, just 1.5 miles from the Silver Queen Gondola, and the downtown core.
- ★ All-day dining and fine cuisine in Plato's Restaurant, five outdoor tennis courts, a state-of-the-art Health center complete with a heated lap pool/hot tub, trail access, 24 shuttle services to downtown, and Airport transfers to and from ASE.



Aspen Square Condominium Hotel

\$\$\$ - \$\$\$\$

617 East Cooper Avenue, Aspen, CO 81611
 aspensquarehotel.com

At Aspen Square Condominium Hotel, you can enjoy the perfect combination of downtown Aspen location, hotel-style services, and home-style comfort. Experience the warmth of wood-burning fireplaces and the convenience of full-size kitchens. Like home, only better. Considerably more spacious than a regular hotel room, our accommodations include a variety of conveniences and amenities: fully-equipped kitchen, private balcony with picturesque views, wood-burning fireplace with wood provided, daily housekeeping service, bathrobes, outdoor heated swimming pool and two hot tubs, fitness center, private off-street and garage parking.

- 📍 In the heart of downtown Aspen directly across from the Silver Queen Gondola.
- 🚗 101 condominiums ranging from fireplace studios, one-bedrooms, two-bedroom/two-bath, three- bedroom, and one four-bedroom. Our 900-square-foot (84-sqm) conference room (gathering room) is a flexible space, which can be set up in a variety of seating options.



Frias Properties of Aspen

\$ - \$\$\$\$

730 E. Durant Avenue, Aspen, CO 81611
 friasproperties.com

With Aspen's largest selection of centrally located vacation rentals, Frias Properties offers more than 125 condos, townhomes, private homes, and residences at Aspen's top luxury resorts including the Ritz-Carlton Club at Aspen Highlands. Guests receive complimentary services and amenities, including Aspen airport transportation, a full-time concierge, luxury bedding and professional housekeeping. Frias Properties also manages Independence Square.

Independence Square - A charming hotel on Aspen's downtown walking mall, the Independence Square offers the most central Aspen location as well as great amenities, including a rooftop hot tub and sundeck.

- 📍 Headquarters is located approximately 3 blocks east of the Silver Queen Gondola.
- 🚗 Frias Properties manages Independence Square in addition to over 125 condos, townhouses, and private homes in Aspen and at Aspen Highlands.
- ★ Complimentary services and amenities to ensure our guests have an enjoyable and effortless experience, including Aspen Airport transportation, passes to a health and fitness facility, a full-service concierge, luxury bedding, and professional housekeeping.



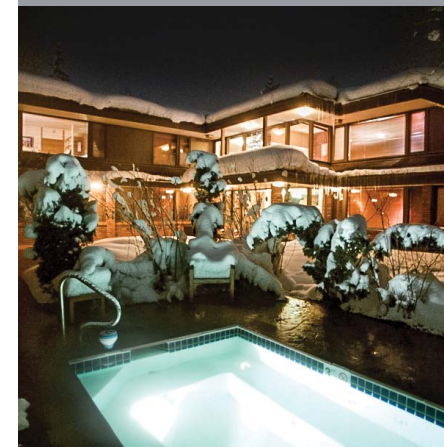
The Gant

\$\$\$ - \$\$\$\$

610 South West End Street, Aspen, CO 81611
 gantaspen.com

The Gant is Aspen, Colorado's premier condominium resort, providing the comforts of home with the services of a luxury hotel. Situated on five acres at the base of Aspen Mountain, The Gant offers one- to four-bedroom condominium apartments with full kitchens, living areas, wood burning fireplaces, and private patios or balconies. Open daily, Pepperjack's Café serves up gourmet coffee, casual breakfast & lunch items, as well as beer, wine and signature cocktails.

- 📍 Downtown Aspen.
- 🚗 One- to four-bedroom condominium apartments. 5,500-square-foot (510-sqm) conference center with one-site food & beverage and private catering services.
- ★ Complimentary Aspen Airport transfers and on demand in-town shuttles, Pepperjack's Café, two heated outdoor swimming pools, three jetted hot tubs, outdoor fireplaces and BBQ grills, fitness center, business center, full-service front desk and bell staff, concierge service, on-site ski rentals and ski valet services, complimentary Wi-Fi, laundry facilities and daily housekeeping.



Hearthstone House

\$\$ - \$\$\$

134 East Hyman Avenue, Aspen, CO 81611
 hearthstonehouse.com

This distinctive lodge in the Frank Lloyd Wright tradition embodies style and elegance while remaining intensely personal. Enjoy a healthy, extended continental breakfast before exploring the sights and cultural activities of Aspen. An afternoon at the Hearthstone House offers a courtyard Jacuzzi, indoor herbal steam room and wine and cheese fireside, and a spectacular view of Aspen Mountain. Our knowledgeable and friendly staff will offer recommendations and make reservations for you to enjoy some of Aspen's renowned cuisine.

- 📍 One block from free skier shuttle, two blocks from pedestrian mall and Wheeler Opera House, and four blocks from Aspen Mountain.
- 🚗 16 rooms, non-smoking.



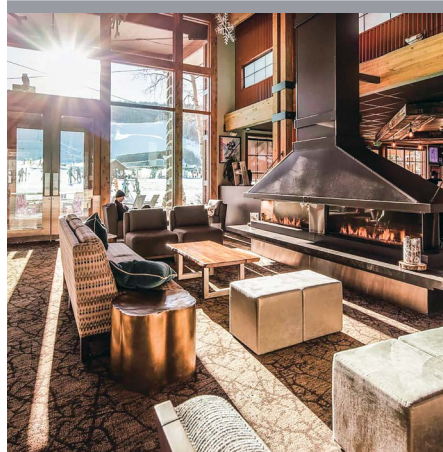
Hotel Jerome, Auberge Resorts Collection

\$\$\$\$

330 East Main Street, Aspen, CO, 81611
 auberesorts.com/hoteljerome

Located in the heart of Aspen, Hotel Jerome, Auberge Resorts Collection, is one of the great hotels of the American West. The 134-year-old historic landmark, which is part of the National Register of Historic Places, boasts luxurious, contemporary accommodations and modern amenities that honor the property's iconic mountain spirit.

- 📍 In the center of downtown Aspen, within walking distance to restaurants and shops, and just a five-minute walk to Aspen Mountain.
- 🚗 99 spacious guest rooms including 15 luxurious suites, two three-bedroom residential suites and two three-bedroom penthouses.
- ★ Known for its incredible restaurants, including the legendary J-Bar, the American bistro, Prospect, Après-ski favorite Living Room, sultry speakeasy Bad Harriet, and Felix Roasting Co. Enjoy rejuvenating treatments at Yarrow Spa along with our outdoor pool, hot tubs, fitness center and ski concierge.



Inn at Aspen

\$\$

38750 Highway 82 Aspen, CO 81611
innataspenn.com

Buttermilk Mountain's only hotel. Here at Buttermilk, we don't take things too seriously. Whether it's your first time hitting the slopes or you're a black diamond expert, we invite you to experience Aspen's Playground. Inn at Aspen offers guests laid-back ski-in/ski-out accommodations at the base of Buttermilk Mountain. One of the four mountains that make up the Aspen Snowmass Resort, Buttermilk is arguably known as the best mountain in the US to learn the sport of skiing. Ski down one of the trails, catch some air on the jumps and rails at the X Games Snowboard Park, or ski uphill if you're feeling brave. And in summer, take in the warm sunshine as you hike or mountain bike to new heights.

- 📍 Base of Buttermilk mountain, conveniently located in between Aspen and Snowmass and a short distance from the airport.
- 🚗 122 guest rooms, complete with a complimentary ski and snowboard storage locker, perfect for storing your gear when you're done tearing up the slopes.
- ★ Fitness center, complete with Peloton bikes and views of Buttermilk, an outdoor heated swimming pool, pool deck, and hot tub, and a firepit for warming up on cold, snowy nights. We offer on-site laundry, vending machines, and a complimentary shuttle service to take you to Aspen or the airport.



Lift One Condominiums

\$ - \$\$\$

131 East Durant Avenue, Aspen, CO 81611
liftone.com

At the base of Aspen Mountain, we are your perfect lodging choice. Only two blocks from the core, our intimate property features one-, two- and three-bedroom condominiums, tastefully decorated with fully equipped kitchens. Just a short walk to the Silver Queen Gondola, steps from Lift 1A and an easy free shuttle ride to our four mountains. When all you want to do is relax, our daily maid service, outdoor heated pool and hot tub, and friendly bilingual staff will help you do just that. You'll have all the comforts of home as you snuggle up by your wood-burning fireplace. Lift One has a welcoming lobby with on-site front desk, two computer areas, and laundry facilities. We provide daily housekeeping, a beautiful outdoor heated pool and hot tub, outdoor grill, a refurbished ski locker room with spacious lockers and boot dryers and complimentary parking. Each unit has fully equipped kitchens, private balconies or patios, free Wi-Fi, HD digital cable, music and DVD players and wood-burning fireplaces.

- 📍 Base of Aspen Mountain. Base of Lift 1A.
- 🚗 28 units: one-, two- and three-bedroom condominiums.



Limelight Hotel Aspen

\$\$\$ - \$\$\$\$

355 South Monarch Street, Aspen, CO 81611
limelighthotels.com

At the Limelight Hotel Aspen, comfort and style have become one and the same. With 126 newly renovated and updated guest rooms and suites, you can enjoy such luxury amenities as a mini-bar with Nespresso machine, retro SMEG mini-fridges, oversized bathrooms, and state-of-the-art TV's with streaming options. Numerous adjacent rooms can be connected for families, and the Lounge not only offers delicious wood-fire pizza and one of Aspen's best après ski scenes with a kid's room, but also a continental breakfast of diverse options ranging from wholesome to downright decadent. No matter how you want to spend your day around Aspen, the Limelight is the ideal basecamp.

- 📍 Downtown Aspen.
- 🚗 120 hotel rooms, six suites with full kitchens.
- ★ 1,776-square-foot (165-sqm) conference room services, 100 guests. 4,000 square feet (372 sqm) of flexible indoor and outdoor event space.



The Little Nell & Residences at The Little Nell

\$\$\$\$

The Little Nell: 675 East Durant Avenue, Aspen, CO 81611
Residences at The Little Nell: 501 East Dean Street, Aspen, CO 81611
thelittlenell.com

The Little Nell: The Little Nell, Aspen's only Five-Star, Five-Diamond, ski-in/ski-out hotel, offers luxury services and unparalleled access to America's most famous mountain town. Guests of The Little Nell - a Relais & Châteaux property - enjoy a cosmopolitan yet intimate ambience, haute cuisine, superior wine and exclusive adventures and amenities designed to rejuvenate the mind, body, and spirit. Also featuring the new ASPENX, which offers bespoke retail, elevated rental equipment, and exceptional food and wine experiences both on- and off-mountain. **Residences at The Little Nell:** The Residences at The Little Nell are exclusive, private residences and guestrooms located next to the Gondola, offering ski-in/ski-out access to legendary Aspen Mountain. Dramatic mountain-inspired architecture and interior design blend with large exterior decks and balconies, a stunning rooftop pool deck, fitness center and unbeatable views. Enjoy the unparalleled services of The Little Nell in your very own Residence.

- 📍 Base of Aspen Mountain; heart of downtown Aspen
- 🚗 The Little Nell - 92 guest rooms, including 14 suites. The Residences - 26 residences, 8 hotel rooms.



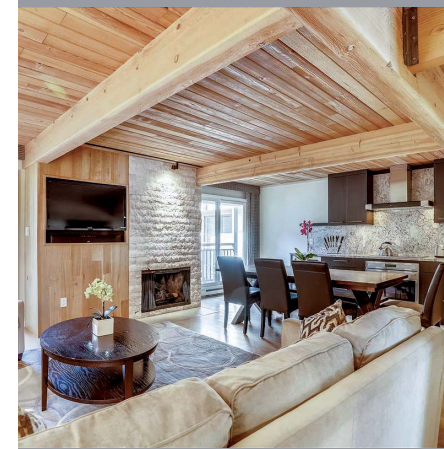
North of Nell Condominiums

\$\$ - \$\$\$\$

555 East Durant Ave, Aspen, CO 81611
northofnell.com

Location, location, location. Located at the base of the world-famous Aspen Mountain, you will find one of the town's best-kept secrets, the North of Nell. Ideally located in the center of Aspen's core, our property is the most convenient place to stay for your family or group. Our comfortable and spacious accommodations include one- to five-bedroom condominiums rated standard, deluxe, and premier. Privately owned, each fully furnished condo is individually decorated. All will feature private balconies and fully-equipped kitchens. Please come see why our guests return year after year.

- 📍 Base of Aspen Mountain.
- 🚗 30 individually decorated condominiums.
- ★ Fully equipped kitchens, private balconies, underground parking, daily housekeeping and concierge.



McCartney Property Management

\$\$ - \$\$\$\$

Building 421 Aspen Airport Business Center, Ste. G, Aspen, CO 81611
mccartneyproperties.com

McCartney offers a wide variety of properties to fit the needs and budgets of all visitors. All units are privately owned and professionally maintained, providing the comforts of home with the advantage of round-the-clock staff. The units range from one-bedroom condominiums to large family residences. Some homes are historic with antiques throughout, while others are the model of modern luxury living. Experience the excellence of over 30 years' dedication to professional property management.

- 📍 Throughout Aspen, ski-in/ski-out, remote estates and the entire downtown core.
- 🚗 One- to three-bedroom condominiums and two- to seven-bedroom homes. Housekeeping, concierge service, on-call maintenance, free parking and 24-hour on-call emergency services.
- ★ Unit amenities vary and can include: cable television, free Wi-Fi, complete kitchens, fireplaces, outdoor heated pool, hot tub, saunas, and access to Jean-Robert's Gym.



The St. Regis Aspen Resort

\$\$\$\$

315 East Dean Street, Aspen, Colorado 81611
stregisaspen.com

Embrace the extraordinary at The St. Regis Aspen Resort, a five-star luxury destination nestled at the base of Aspen Mountain. From our hotel's enviable vantage point, guests can enjoy world-class skiing or stroll over to historic Aspen, where luxury boutiques and charming restaurants beckon. Our resort is defined by exceptional experiences; Velvet Buck presents modern mountain cuisine and Mountain Social is the definitive après ski destination serving handcrafted cocktails; our St. Regis Butler Service stands ready to assist you 24 hours a day; and Remède Spa, our award-winning wellness destination, is renowned as one of the world's premier hotel spas, while our heated outdoor pool and hot tubs overlook stunning Aspen Mountain.

- 📍 At the base of Aspen Mountain, just about one block away from the Silver Queen Gondola.
- 🚗 Retreat into sophistication in our 154 luxury rooms, 25 suites, and 25 residences, each featuring sumptuous 400-thread-count Frette linens, spacious marble bathrooms and custom furnishings by Ralph Lauren.



St. Moritz Lodge & Condominiums

\$ - \$\$

334 West Hyman Avenue, Aspen, CO 81611
stmoritzlodge.com

The St. Moritz Lodge is a friendly European-style lodge offering our guests a comfortable and relaxed atmosphere. We are located at the foot of Shadow Mountain in the quiet west end with an easy eight-minute walk to the center of town. The St. Moritz Lodge & Condominiums offers an array of accommodations; from our standard lodge and rooms with kitchenettes, to our one- and two-bedroom condos. For the economy-minded traveler, we offer private hostels with shared bathrooms. The free skier shuttle is located only two blocks away.

- 📍 Six blocks from the center of town and two blocks from the free skier shuttle.
- 🚗 13 lodge rooms, 8 rooms with kitchenettes, one- and two-bedroom condominiums and private hostels with shared bathrooms.
- ★ Continental breakfast, pool/hot tub, steam room, après ski with wine, hot spiced cider and snacks, HD flat screen TV's with HBO, free internet and local and US LD calls, free parking and BBQ grills.



W Aspen

\$\$\$ - \$\$\$\$

550 S. Spring Street, Aspen CO, 81611
waspenhotel.com

As one of the only Alpine Escapes in North America, W Aspen is poised to carve out a new era of luxury. You'll find our hotel nestled at the base of one of the world's most fabled mountains, with access to all its coveted slopes and trails - plus stunning 360° mountain views and striking architectural and interior design. Discover a bold point of view in this iconic town and enjoy a year-round pass to sky-high adventure. Our slopeside access gets you on the mountain for morning runs and our street-adjacent bike shop can get you outfitted for any style of riding experience. The Sky Residences at W Aspen affords an exclusive shared ownership opportunity that includes access to a private, Residences-only 4th floor roof deck and all of W Aspen's signature amenities. Our boutique hotel is within minutes of many additional outdoor activities, adventure experiences, museums, art galleries and music venues, and high-fashion boutiques. W Aspen is truly an immersive experience.

- 📍 At the base of the Aspen Mountain.
- 🚗 88 Guest Rooms, 11 Sky Residences.
- ★ Ski-in/ski-out access at the base of Aspen Mountain, 8,000-square-foot (743 sqm) WET deck with 360-degree views of Aspen, Four Mountain Sports, FIT gym, and a living room with a 1,600-square-foot (149 sqm) mountain terrace.



FEATURED LODGING

SNOWMASS

Staying in Snowmass is a treat for anyone looking for a true mountain getaway. With boundless ski-in/ski-out accommodations, activities for the whole family in Snowmass Village and on-mountain, and over 3,300 skiable acres (1,335 ha) of terrain at Snowmass alone, booking a visit to Snowmass is an ideal winter vacation.



The Crestwood Condominiums

\$\$ - \$\$\$\$

400 Wood Road, Snowmass Village
thecrestwood.com

The Crestwood is a renowned condominium hotel on the slopes in Snowmass Village offering premier location, comfortable private residence accommodations and wonderful amenities to guests. The slopeside location provides guests with the best ski-in/ski-out access to Snowmass. Guests of The Crestwood will find a centralized base for their outdoor adventures with the comforts of home and amenities of a first-class resort.

- 📍 Slopeside across from Base Village with Fanny Hill and Assay Hill on either side of the property.
- 🚗 100 one- to four-bedroom condominiums with three levels of condominium ratings (Standard/Deluxe/Premier), there is over 2,100 square feet of meeting space available with a full-time conference manager.
- ★ Excellent services and amenities include complimentary Aspen Airport transportation, daily housekeeping, full-service front desk/concierge along with heated outdoor swimming pool and 3 hot tubs, there is also a skier service center located slopeside with firepit area.



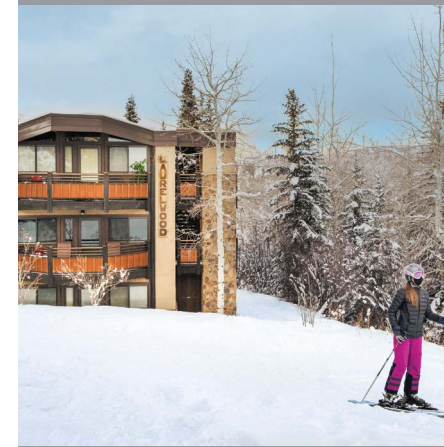
Destination by Hyatt – Snowmass

\$\$ - \$\$\$

P.O. Box 5008, 300 Carriage Way, Snowmass Village, CO 81615
destinationsnowmass.com

Choose from a variety of lodging options within the Destination by Hyatt - Snowmass collection. Accommodations range from luxury ski-in/ski out to more moderately priced options within walking distance to the slopes. Visitors can enjoy all the amenities of a hotel with all the comforts of home. Our collection includes ski-in/ski-out properties such as, Top of the Village and Woodrun Place. The Villas at Snowmass Club with panoramic views of Snowmass Mountain and Mt. Daly offers access to the private amenities of the Snowmass Club. The Stonebridge Inn is a quaint chalet-style hotel in the heart of Snowmass Village. Additional properties in our collection include Aspenwood, Terracehouse, Lichenhearth, Tamarack Townhomes and Capitol Peak Lodge.

- 📍 Various locations throughout Snowmass Village to the Snowmass Golf Course and everywhere in between.
- 🚗 Explore a variety of accommodations that range from studios to five-bedroom condominiums and hotel rooms.
- ★ All of our condominiums offer full kitchens, living areas, fireplace, and ski storage. Some offer private decks and patios, parking and complimentary Aspen airport and in-town shuttle service. All properties offer outdoor hot tubs, pools and some offer fitness facilities with saunas. The Artisan Restaurant offers seasonal cuisine and comfortable atmosphere on the lobby level of The Stonebridge Inn. The Destination by Hyatt Snowmass properties are on or close to the free bus route to downtown Aspen, Aspen Mountain, Highlands, and Buttermilk.



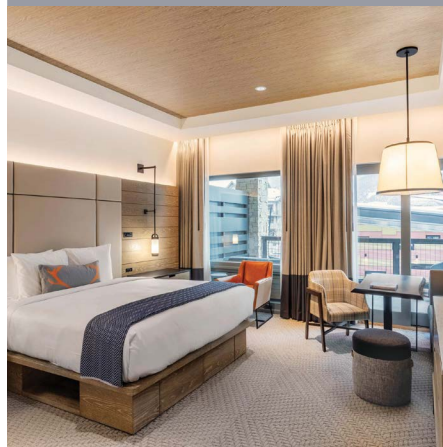
Laurelwood & Interlude Condominiums

\$\$ - \$\$\$

640 Carriage Way, Snowmass Village, CO 81615
laurelwoodcondominiums.com

Experience the ultimate mountain paradise at our slopeside properties in Snowmass Village, CO. Choose from a range of fully-equipped ski-in/ski-out studio, two-bedroom and three-bedroom condos, all featuring private balconies or patios, full kitchens and cozy fireplaces.

- 📍 Above the Village Mall and slopeside to Snowmass Mountain.
- 🚗 Laurelwood & Interlude Condominiums collectively feature 60 ski-in/ski-out condominiums, available in Standard, Deluxe & Premier room types.
- ★ Ski-in/ski-out access, on-site hot tubs, BBQ grills, secure ski storage, personal fireplaces, one complimentary transfer to and from Aspen Airport, fully equipped kitchens, private balconies or patios, and on-site or in-room laundry facilities.



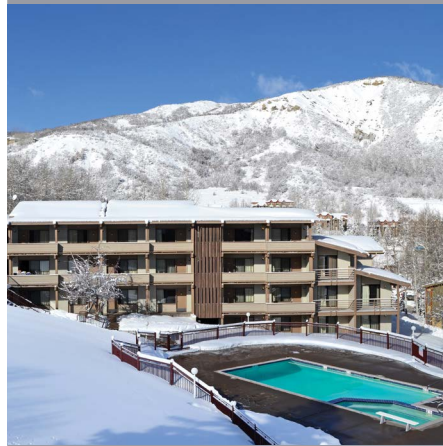
Limelight Hotel Snowmass

\$\$\$ - \$\$\$\$

665 Wood Road Snowmass Village, CO 81615
limelighthotels.com

Located in Snowmass Base Village adjacent to the Elk Camp Gondola, the Limelight Hotel Snowmass, which opened in December 2018, provides guests with ski-in/ski-out access as well as proximity to Snowmass' shops and attractions. The property features 99 spacious guest rooms, a lobby lounge with bar and restaurant, a conference space, private dining room, spa pools, children's game area and fitness facilities. Two-bedroom residences featuring full kitchens, high-level finishes and exceptional views. Colorado's largest indoor rock-realistic climbing wall, towering at 54 feet (5 m) high dominates the façade of the new hotel.

- 📍 Snowmass Base Village.
- 🚗 99 hotel rooms, 11 private residences (six two-bedroom and five three-bedroom residences).
- ★ Ski-in/ski-out via Elk Camp Gondola or Assay Hill, ski concierge with complimentary ski storage, breakfast- expanded continental included, fitnesses center, Limelight Lounge restaurant with best après in town, five-story climbing wall, kids' game room, outdoor heated spa pools, outdoor fire pit, snowshoes, shuttle service to Aspen (ASE) Airport, shuttle service around Snowmass Village, 24-hour front desk, meeting/event room, private dining room.



Pokolodi Lodge

\$ - \$\$

25 Daly Lane Snowmass Village, CO 81615
pokolodi.com

The Pokolodi Lodge is one of Snowmass Village's most popular and affordable lodges. It is an independent hotel that prides itself on building personal relationships with guests. Providing excellent guest service and comfortable accommodations are a priority.

- 📍 60 yards from the ski slope and adjacent to the Snowmass Village Mall.
- 🚗 50 standard hotel rooms.
- ★ Free continental breakfast, wine and cheese party (Mondays), free Wi-Fi, 50" smart TVs, and free shuttle to and from Aspen Airport.



Snowmass Mountain Lodging by East West Hospitality

\$\$ - \$\$\$\$

45 Wood Road P.O. Box 5550 Snowmass Village, CO 81615
snowmassmountainlodging.com

Snowmass Mountain Lodging welcomes you to an entirely new Snowmass Base Village vacation experience in one of our luxury condominium properties, One Snowmass, Lumin, Capitol Peak Lodge, and Hayden Lodge. Spectacular views, a new lively plaza complete with new restaurants, shopping, family-friendly activities, and events, and the closest proximity to Snowmass Mountain lift access create the perfect atmosphere for your mountain getaway. With Snowmass Mountain Lodging you will receive a tailored vacation experience curated to your specific needs by our exceptional reservations team, on-site guest services, pre-arrival concierge services, grocery delivery, Aspen Airport transportation, and more. Reach out today to start planning.

- 📍 Snowmass Base Village; Ski-in/walk-out, steps to Elk Camp Gondola, Village Express Lift, the Treehouse Kids Adventure Center, and Ski School.
- 🚗 Our Luxury Residences offer one to four bedroom fully equipped residences with a fireplace and balcony in Snowmass Base Village Properties, including Capitol Peak Lodge, Hayden Lodge, One Snowmass, and Lumin.
- ★ All guests receive complimentary on-site 24 guest services, concierge and bell services, Aspen Airport transportation, 1 garage parking space, private ski lockers, and Wi-Fi. Housekeeping services are available for a fee. Each property offers individual onsite amenities as well - please inquire.



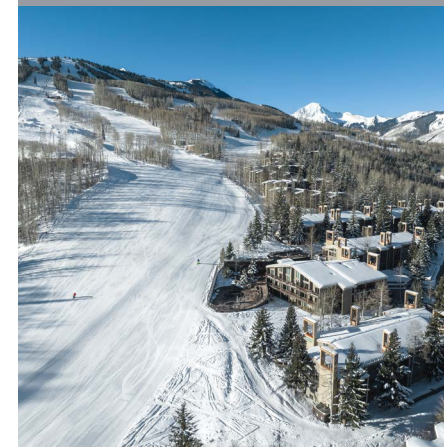
Stonebridge Snowmass Condominiums

\$\$\$

30 Anderson Lane, P.O. Box 5990, Snowmass Village, CO 81615
stonebridgesnowmass.com

With beautiful scenery, amazing mountain adventures, notorious après-ski, and world-class dining, no other resort welcomes you like Aspen Snowmass. Your Snowmass Stonebridge Condominium vacation will greet you with all the splendor the resort has to offer including an impressive list of property amenities.

- 📍 With the ultimate ski-in/ski-out location next to the Village Express lift at Fanny Hill, skiing and boarding couldn't be any more convenient.
- 🚗 Condos ranging from one- to four-bedrooms.
- ★ All the amenities of resort living including fully equipped kitchens, balconies, and fireplaces.



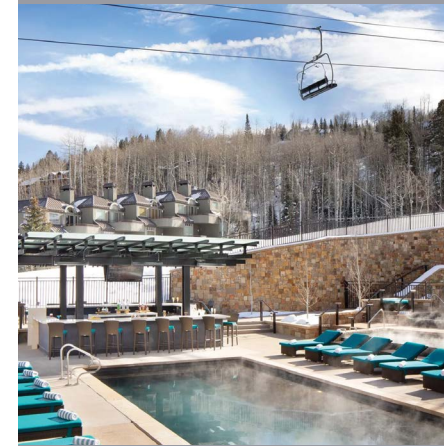
Timberline Condominiums

\$\$ - \$\$\$

131 East Durant Avenue, Aspen, CO 81611
690 Carriage Way Snowmass Village, CO 81615
thetimberline.com

The Timberline Condominiums are deluxe private vacation rentals located slopeside on Snowmass Ski Area. Ranging from studios to two-bedroom lofts, The Timberline has the right space and location to enjoy your mountain getaway.

- 📍 Slopeside on Snowmass Ski Area a short distance uphill from the Snowmass Mall.
- 🚗 83 units ranging from an efficient studio to a spacious two-bedroom loft with ratings of Standard, Deluxe, and Premier.
- ★ The Timberline Condominiums offer daily housekeeping, slopeside pool and hot tubs, and complimentary shuttle service from the Aspen Airport and around Snowmass Village.



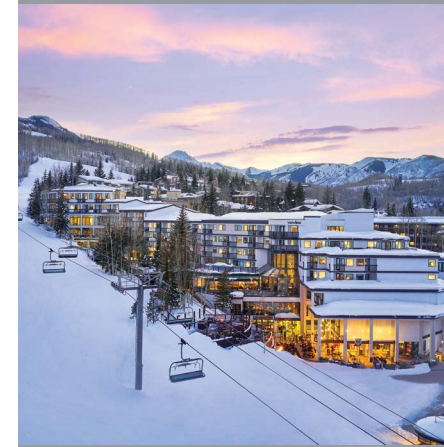
Viceroy Snowmass

\$\$\$ - \$\$\$\$

130 Wood Road, P.O. Box 6985, Snowmass Village, CO 81615
viceroysnowmass.com

Viceroy Snowmass luxury resort offers ski-in/ski-out lodging, complemented by imaginative dining and lounging, a Ute-native American inspired wellness spa, and a year-round pool terrace, café and ski in/out pool bar. 165 luxuriously appointed suites and residences, this ski-in/ski-out property is located on Assay Hill with units ranging from studio to a three-bedroom penthouse. Each studio/residence comes with an efficiency to full kitchen with custom Italian cabinetry, gas fireplaces, relaxing bedding and plenty of square footage. High-definition TVs with on-demand programming as well resort information, washer/dryer available in one-bedroom residences and larger.

- 📍 Ski-in/ski-out on Assay Hill, in the heart of Base Village.
- 🚗 11,000 square feet (1,022 sqm) of conference space including ballroom, salons, board rooms, and private dining space.
- ★ Complimentary scheduled Aspen Airport shuttle and around Snowmass transfer service, once daily housekeeping service. In room dining: TORO Kitchen & Lounge delight in Pan-Latin cuisine, Cafe V cappuccino lounge, and a ski-up and pool side bar at NEST serving burgers, sandwiches and other pool side libations.



Viewline Resort Snowmass

\$\$\$ - \$\$\$\$

100 Elbert Lane, Snowmass Village, CO 81615
viewlinerortsnowmass.com

Inspired by a love for our natural surroundings, community, and adventure, Viewline Resort Snowmass is an all-season destination for discovering joy and sharing unforgettable experiences. At our modern, slopeside resort, you'll find endless opportunities for exploration and rest, for laying low or reaching new heights—and for doing it all together.

- 📍 Slopeside on Fanny Hill, the Viewline Resort offers easy access to all that Snowmass Village has to offer - step out our front door for a leisurely stroll through village mall or take the "skittles" gondola to Base Village to explore more!
- 🚗 A mix of traditional guestrooms and expansive suites including two 2-bedroom residential style units complete with full kitchens (254 rooms total). The property recently completed a \$50 million transformation for an elevated yet comfortable mountain resort experience. The Viewline Event Center boasts over 18,000 square feet (1,672 sqm) of meeting space and is the largest event center in the Roaring Fork Valley.
- ★ We invite you to connect with each other while feeling like you belong here. Whether it's roasting s'mores over our fire pits, watching a family movie in our auditorium, hanging out slopeside with DJs during "Moet on the Mountain," or dining in our private "snowglobe," you'll truly discover our mountain magic!



Woodrun V

\$\$\$ - \$\$\$\$

P.O. Box 6148, 024 Village Bound Road, Snowmass Village, CO 81615
woodrunv.com

Woodrun V is privileged to offer some of the largest, multi-level, two-, three- and four-bedroom condominiums in Snowmass Village. Our unique location provides a quiet, serene setting for families of any size. Many of our units throughout the complex offer ski-in/ski-out access to Snowmass Mountain, via Fanny Hill or Assay Hill. All services are provided with no additional fees to our guests.

- 📍 Adjacent to Fanny Hill and across from the Village Mall, with easy access to Base Village for your shopping and dining needs.
- 🚗 All residences include a private entrance, wood or gas fireplace, outdoor grills and exceptional mountain views.
- ★ There are two hot tubs and a heated pool on the property. Woodrun V offers the amenities you expect, including on-site front desk, valet parking, bell service, housekeeping, assigned covered parking for one vehicle, Wi-Fi and package and mail delivery.

FEATURED LODGING

BASALT



Element Basalt

\$\$ - \$\$\$

499 Market Street, Basalt, CO 81621
 elementbasaltaspen.com

Enjoy everything the Roaring Fork Valley has to offer from our perfect location in Willits Town Center. Whole Foods, a variety of restaurants and shops, and our acclaimed local bus system with stops from Aspen to Glenwood Springs are located just steps from our front door. Element Basalt-Aspen, a Marriott hotel, offers spacious rooms and suites with kitchenettes or full kitchens, perfect for the entire family. Daily hot breakfast and on-site parking are complimentary, and we never charge resort fees. Whether you're planning a summer getaway near the Rio Grande Trail, a ski vacation to Aspen/Snowmass, or an extended stay, Element Basalt-Aspen provides the comfort and amenities to make you feel at home.

- 📍 Just down the road from Snowmass in the heart of Willits Town Center.
- 🛏️ 113 rooms.
- ★ Signature Westin Heavenly Beds & spa-inspired bathrooms, indoor pool, outdoor hot tub, outdoor fire pit, 24-hour gym. 626-square-foot (58-sqm) meeting room.

FEATURED LODGING

GLENWOOD SPRINGS



Hotel Colorado

\$ - \$\$

526 Pine St. Glenwood Springs, CO 81601
 hotelcolorado.com

Hotel Colorado has been delighting guests with its legendary hospitality since 1893, and we can't wait to welcome you. The area is rich with outdoor recreation opportunities, with stunning hiking and mountain biking experiences, skiing and snowboarding, white-water rafting in Glenwood Canyon, and world-class fishing on the Roaring Fork River. Guests love our proximity to Iron Mountain Hot Springs, Yampah Spa, and Glenwood Caverns Adventure Park, all surrounded by the vast and beautiful White River National Forest. Throughout our long history, Hotel Colorado has played host to such historical figures as Teddy Roosevelt, William Taft, and the "Unsinkable" Molly Brown. Today, our guests range from world travelers exploring the Rocky Mountains to locals looking for an escape from the quotidian. Hikers, skiers, mountain bikers, couples, wedding guests, travelers, and more have called Hotel Colorado home for a night, a weekend, or an extended stay. We're turning the page on another chapter in our storied hospitality history with guest-ready, newly remodeled rooms that have a fresh look and feel.

- 📍 Right in downtown Glenwood Springs, mere steps from Glenwood Hot Springs.
- 🛏️ 134 total guestrooms with 10,000 square feet (929 sqm) of flexible meeting and event space.



Winter Key Events

Races, concerts, competitions, parties, and other lively happenings take place all season long across Aspen Snowmass. Big-name performers via the Bud Light Hi-Fi Concert Series, action-packed alpine racing and endurance competitions, round-table discussions with global thought-leaders during the Aspen U series—the calendar of events is stacked.

The 2023-2024 season will host the 47th year of Aspen Gay Ski Week (the longest running in the country), world-renowned ski racing events (both uphill and downhill), full moon gatherings toasting Ullr, and so much more.



For the most up to date events calendar, please scan the QR code.



Our Values in Action

At Aspen Snowmass, We're About More Than Just Skiing

What if the place you chose to recreate wasn't just a business that sold you lift tickets and gear rentals, but had a bigger mission? What if it used some of its revenue, and a lot of its labor, to have an impact on issues like climate change, clean energy, affordable housing, and racial justice? At Aspen Snowmass, we're bridging our values with work and play. We're a place where taking care of our local and global community is a priority—and we've taken the action to prove it. Aspen Snowmass is a values-driven company—owned and operated by people who nurture and respect the coexistence of resort, community, and the environment. We aim to honor our past while striving for a brighter future—we are where place meets purpose. Join us and be reminded of yours.

To find out more about the values behind Aspen Snowmass, please scan the QR code.



Getting Here

Aspen/Pitkin County Airport

You've just touched down slopeside, and there are four incredible mountains all within a 15-minute drive from the runway. Aspen Snowmass is one of the most accessible ski resorts in the world, with hundreds of nonstop and connecting flights weekly. North America's only slopeside airport, Aspen/Pitkin County Airport (ASE) is located just 3 miles (4.8 km) from Aspen and 6 miles (9.6 km) from Snowmass Village, offering service with United Airlines, Delta, and American Airlines.

Roaring Fork Express

Skip the rental car and highway winter driving with reliable ground transportation to and from Aspen. Enjoy daily scheduled shuttle routes and on-demand charters between Aspen and Snowmass and Denver International Airport with Roaring Fork Express, serving mountain towns across the west since 1985.

Book shuttle services with your travel provider or directly at roaringforkexpress.com, or call 970-486-3002 or 800-822-4844.

Sentient Jet Private Air Travel

Interested in flying privately to Aspen? Take off with Sentient Jet, the official private jet provider of Aspen Snowmass. For nearly 25 years, Sentient has been a pioneer in private aviation—inventing industry firsts like the Jet Card and developing a premium yet practical flying experience. Sentient Jet Cards offer all the convenience and ease that comes with standard air travel, without the hassle, maintenance, and high cost of owning a jet. sentient.com

Complimentary Airport Transfer

Most lodges provide complimentary transfers to and from Aspen/Pitkin County Airport. There is also a taxi service available at the airport and throughout Aspen and Snowmass.

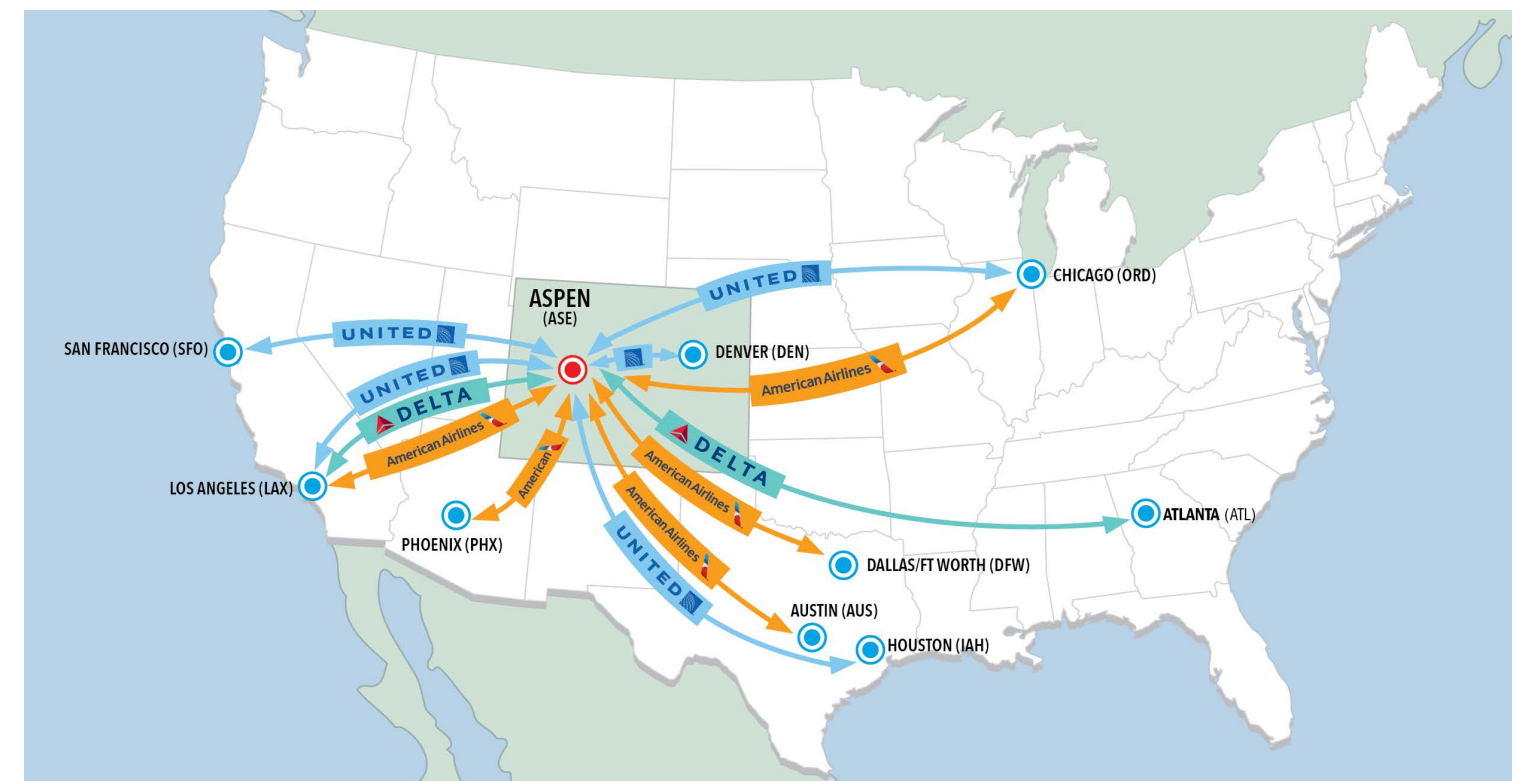
Free Skier Shuttle

Local transportation is comprehensive and convenient and the fastest and easiest way to move from place to place. Free shuttle buses run continuously between all four mountains during the day and between the towns of Aspen and Snowmass until 2am.

Nonstop service to Aspen/Pitkin County Airport (ASE):

- Atlanta, GA (ATL): 2 flights daily
- Austin, TX (AUS): 1 flight daily peak season
- Chicago, IL (ORD): Up to 7 flights daily
- Dallas/Ft. Worth, TX (DFW): Up to 5 flights daily
- Denver, CO (DEN): Up to 8 flights daily, connections from 100+ cities coast-to-coast
- Houston, TX (IAH): Up to 4 flights daily
- Los Angeles, CA (LAX): Up to 7 flights daily
- Phoenix, AZ (PHX): 1 flight daily
- San Francisco, CA (SFO): 2 flights daily

For more information, visit aspensnowmass.com





ASPEN SNOWMASS



Special thanks to photographers:

Ann Driggers, Anna Stonehouse, Craig Turpin, Dan Bayer, Frank Shine, Hal Williams, Jared Harrell, Jeremy Swanson, Jesse Hoffman, Jordan Curet, Matt Power, Oliver Sutro, Sam Axness, Sam Ferguson, Tamara Susa, and Tyler Wilkinson-Ray.

Aspen Snowmass resort partners are proud to help you bring home wonderful memories.



HUBLOT



SENTIENT
JET



LAVAZZA
TORINO, ITALIA, 1895

